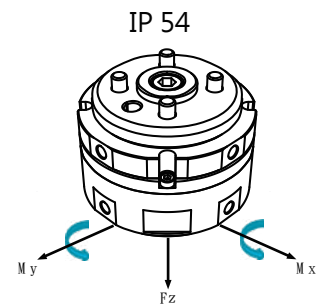
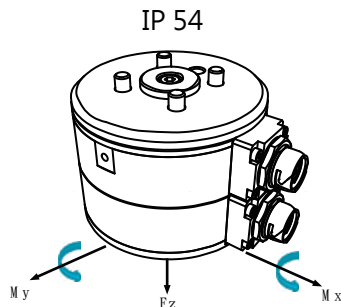




技術資料 Technical data

規格型號 Model No.	DDF-30-E 電子旋轉接頭	DDF-30 空氣旋轉接頭
旋轉角度 Rotary angle	無限旋轉 Unlimited	無限旋轉 Unlimited
最大軸向力 Max Fz	50N	50N
最大負載扭矩 Max Mxy	6N-m	6N-m
電路導通數 Electric Path	12	N/A
電路傳輸 Elec. Transmission	24V/2A	N/A
流體導通數 Pneumatic Path	N/A	4
流體傳輸 Pneu. Transmission	N/A	10 bar
最大轉速 Max Velocity	150 RPM	120 RPM
環境溫度 Temperature Range	5~60 °C	5~60 °C
初始扭矩 Initial Torque	0.5N-m	0.5N-m
穩態扭矩 Constant Torque	0.4N-m	0.4N-m
產品重量 Product Weight	0.5kg	0.25kg
產品高度 Product Height	50mm	40mm
產品直徑 Product Diameter	66mm	60mm
組裝界面 Mounting Interface	ISO 9409-1-31.5-4-M5	ISO 9409-1-31.5-4-M5
IP等級 IP Degree	IP 54	IP 54



訂購代號 How to order

DDF-30-E - L1 - X1
A B C

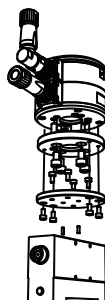
DDF-30- L2
A B

產品型號主要標明旋轉接頭型式、選配件，以利訂貨時雙方對產品的確認。
 Model main marked rotary joint type, options, confirm both sides to facilitate ordering of products.

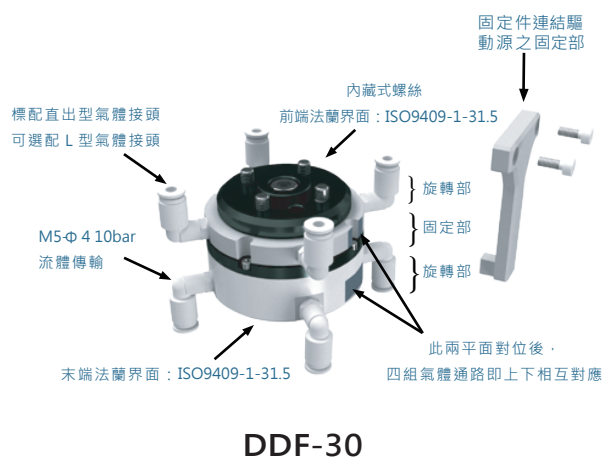
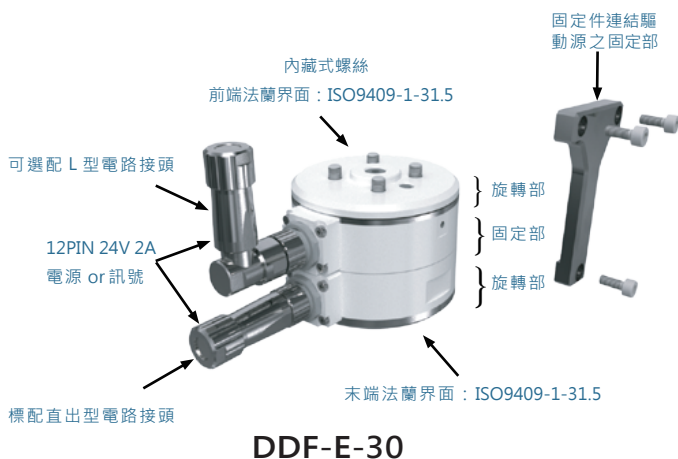
代號	項目	說明	
A	型式	DDF-30-E: 電路旋轉接頭	DDF-30: 流體旋轉接頭
B	電路連接器/氣體快速接頭 Circuit connector / Gas quick connector	無: 直出型電路連接器x2	無: 直出型快速接頭x8
		L1: 直出型x1、L型x1	L1: 直出型x4、L型x4
		L2: L型電路連接器x2	L2: L型快速接頭 x8
C	搭配 REH EGN EZN 電動夾爪 With REH EGN EGN electric gripper	無: 無搭配	N/A
		X1: 搭配REH16配件 (註二)	N/A
		X3: 搭配REH32配件 (註二)	N/A

- 電路旋轉接頭 搭配RGK REH EGN EZN 電動夾爪 配件，包含電動夾爪端電路連接器與線材，可完整傳輸電動夾爪所需的電力與訊號。
- Circuit rotary joint accessories, including electric gripper end circuit connector and cable, the signal can be transmitted in full electric power and jaw required.

組裝方式 Assembly methods



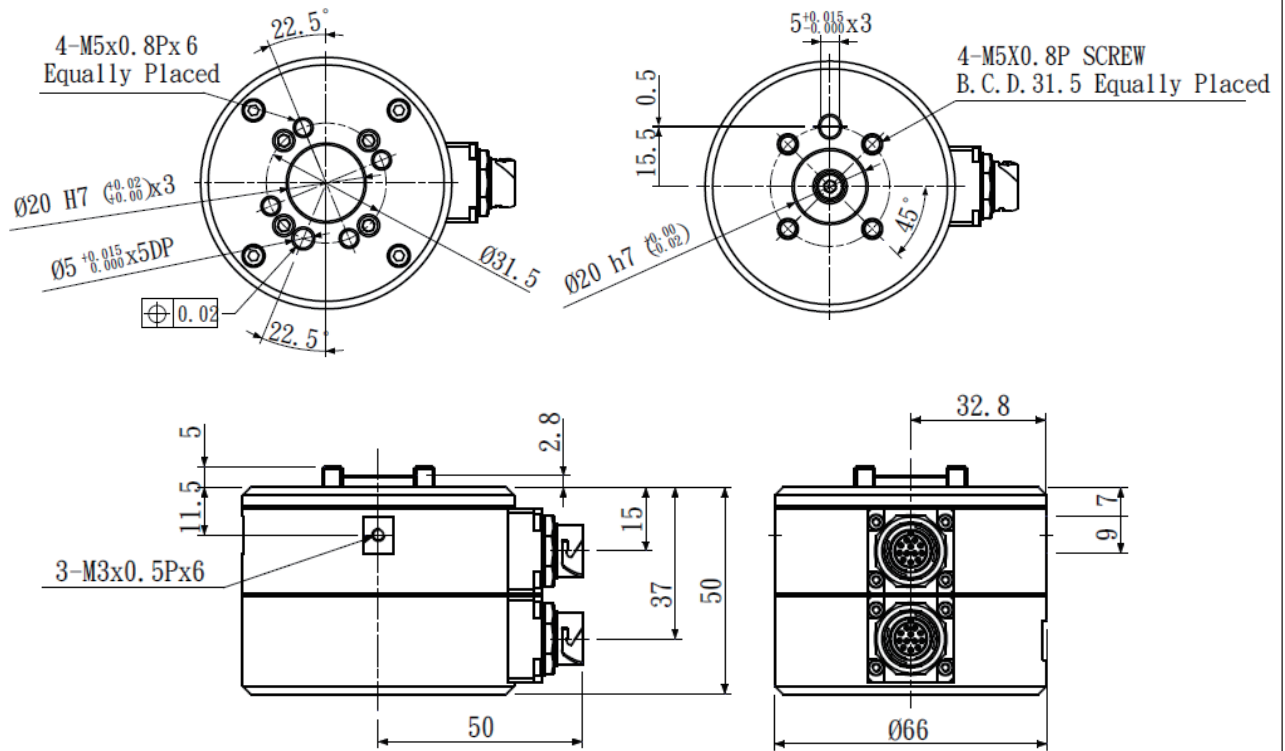
DDF-30-E 搭配 REH-16 電動夾爪
 DDF-30-E with PEH-16 electric gripper



DDF

外觀尺寸圖 Dimensions

DDF-E-30



DDF-30

