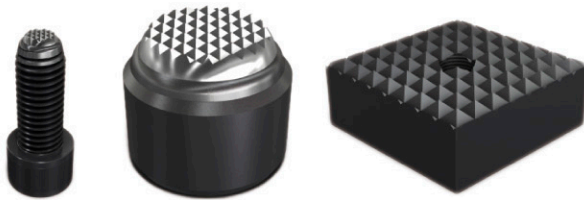


金屬夾緊介質 Metal gripping inserts

在夾爪前端安裝固定塊增加夾爪與工件之間的摩擦。
 Inserts on the top of finger for increasing the friction on the contact surface between gripper finger and the work piece.

功能說明 Function description

使用GK系列的夾爪配件，增加夾爪與工件之間的摩擦力使工件穩固夾持，達到自動化效果。
 The use GK can increase the friction on the contact surface between gripper finger and the work piece, gripping more firmly, achieve the effect of automation.

**備註 Note:**

使用GK系列夾持工件，可能有夾持痕跡的機率比較大。
 Using GK to grip the workpiece can have bigger chance of leaving gripping marks.

你的優勢 Your advantage

- 增加摩擦係數
- 多種尺寸可供挑選
- 模組化設計
- 高乘載能力
- Increase the friction coefficient
- Many sizes are available
- Modular design
- High load carrying capacity

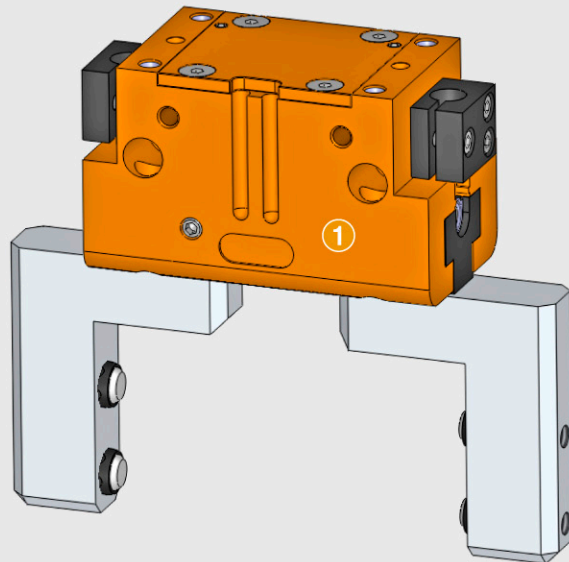
應用領域 Field of application

- 各種夾持方案。
- Every gripping solution.

GK 系列簡介 Introduction

- 材質 Material: 鋼 Steel SKH
- 保固 Warranty: 12個月 12 months

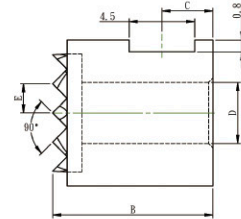
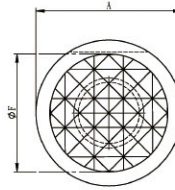
- 1 RGN+125 2指平動夾爪, 末端 Finger 搭配硬質合金刀片夾持 RGN-plus 125 2-Finger Parallel Gripper, with top fingers equipped with carbide clamping inserts.



GK21 齒型支持件

GK21 Tooth type support

- 材 質：本體S45C
- 熱處理：本體HRC 33°
- 表 面：染黑處理
- 用 途：支持黑皮面之工件
- Material: Body-S45C
- Heat treatment: Body-HRC 33°
- Surface: Black treatment.
- Purpose: Support black leather surface workpiece.



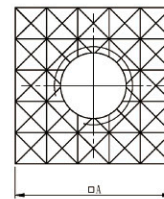
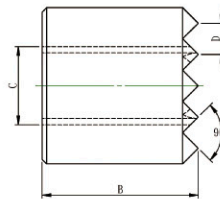
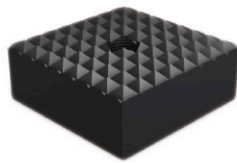
MODEL NO.	A	B	C	D	E	F	kg
GK21-1010	10	10	3.4	M5	2.3	8.1	0.005
GK21-1212	12	12	4.0	M6	3.0	9.6	0.008
GK21-1612	16	12	4.0	M6	3.0	13.0	0.016
GK21-2012	20	12	4.0	M6	3.0	16.3	0.025
GK21-2512	25	12	4.0	M6	3.0	19.5	0.040

MODEL NO.	A	B	C	D	E	F	kg
GK21-1010-K	10	10	3.4	M5	2.3	8.1	0.005
GK21-1212-K	12	12	4.0	M6	3.0	9.6	0.008
GK21-1612-K	16	12	4.0	M6	3.0	13.0	0.016
GK21-2012-K	20	12	4.0	M6	3.0	16.3	0.025
GK21-2512-K	25	12	4.0	M6	3.0	19.5	0.040

GK20 齒型支持件

GK20 Tooth type support

- 材 質：SKH9
- 熱處理：本體HRC 60°
- 表 面：染黑處理
- 用 途：支持黑皮面工件用
- Material: SKH9
- Heat treatment: Body-HRC 60 °
- Surface: Black treatment
- Purpose: Support black leather surface workpiece

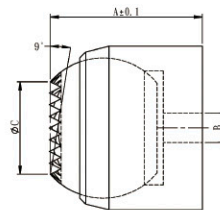
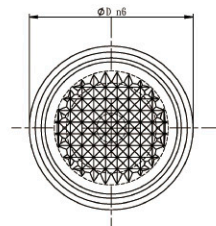


MODEL NO.	A	B	D	E	kg
GK20-1010	10	10	M5	2.3	0.008
GK20-1210	12	10	M6	3.0	0.010
GK20-2010	20	10	M6	3.0	0.030
GK20-2510	25	10	M6	3.0	0.043

GK53 齒面動向鋼珠支持件

GK53 Tooth movements steel ball type support

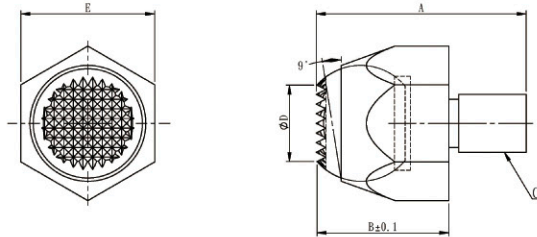
- 材 質：本體 S45C / 鋼珠 SUJ2
- 熱處理：本體 HRC 28°~32° / 鋼珠 HRC 62°
- 表 面：染黑處理
- 用 途：適用於支持或夾持工件之斜面上，使其不易變形。
- Material: Body-S45C / Steel ball-SUJ2
- Heat treatment: Body-HRC 28° ~ 32° / Steel ball-HRC 62°
- Surface: Black treatment
- Purpose: Suitable for supporting or gripping the work piece on its slope so it won't deform



MODEL NO.	A	B	C	D	max (KN)	g
GK53-0311	11	M3x0.5	7.2	12	10	8
GK53-0417	17	M4x0.7	10.5	18	25	30
GK53-0525	25	M5x0.8	20.0	28	90	80

GK02 齒面動向鋼珠螺桿支持件

GK02 Tooth movements steel ball screw type support

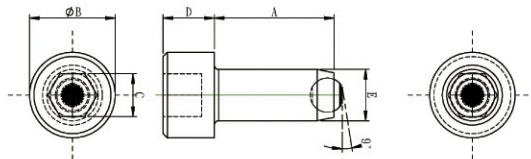


- 材 質：本體 S45C，鋼珠 SUJ2
- 熱處理：本體 HRC 28°~32°
鋼珠 HRC 62°
- 表 面：染黑處理
- 用 途：適用於支持或夾持工件之斜面上，使其不易變形
- Material: Body-S45C / Steel ball-SUJ2
- Heat treatment: Body-HRC 28° ~ 32° / Steel Ball-HRC 62°
- Surface: Black treatment
- Purpose: Suitable for supporting or gripping the work piece on its slope so it won't deform.

MODEL NO.	A	B	C	D	E	kg
GK02-0610	21	10	M6x1.00	6	10	0.012
GK02-0814	25	12	M8x1.25	8	14	0.015
GK02-1017	30	16	M10x1.50	10	17	0.025
GK02-1222	35	22	M12x1.75	12	22	0.070
GK02-1627	42	26	M16x2.00	14	27	0.140
GK02-2036	55	27	M20x2.50	14	36	0.280
GK02-2436	65	32	M24x2.00	18	36	0.560
GK02-3046	80	35	M30x2.00	21	46	0.880

GK17C 動向鋼珠螺桿 齒型

GK17C Movements steel ball screw-tooth type



- 材 質：本體 SCM21 / 鋼珠 SUJ2
- 熱處理：本體 HRC 28°~32°
鋼珠 HRC 62°
- 用 途：配合治具零件的組成，可做夾持或支持之用
- 特 長：點接觸，工件不易變形
- Material: Body-SCM21 / Steel ball-SUJ2
- Heat treatment: Body-HRC 28° ~ 32° / Steel ball-HRC 62°
- Purpose: Coordinate with jig's parts, for supporting or gripping purposes.
- Features: point contact, the work piece will not easy be deformed.

MODEL NO.	A	B	C	D	E	max (KN)	g
GK17C-0615	14	10	5	6	M6	9	5.3
GK17C-0625	23						7.4
GK17C-0635	33						9.5