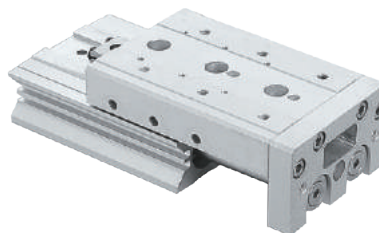




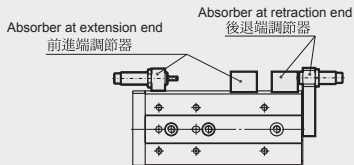
# MCS



### 技術資料 Technical data

型號 Model	MCS-16	MCS-20	MCS-25
做動方式 Acting type	複動型 Double acting		
氣缸內徑 Tube I.D.	16	20	25
配管尺寸 Port size	M5x0.8	Rc1/8	Rc1/8
使用速度範圍 Available speed range	mm/sec		50-500
最小壓力 Min. pressure	bar	0.15	0.2
最大壓力 Max. pressure	bar	7	8
最小/最大溫度 Min./max. temperature	°C	5 - 60	5 - 60

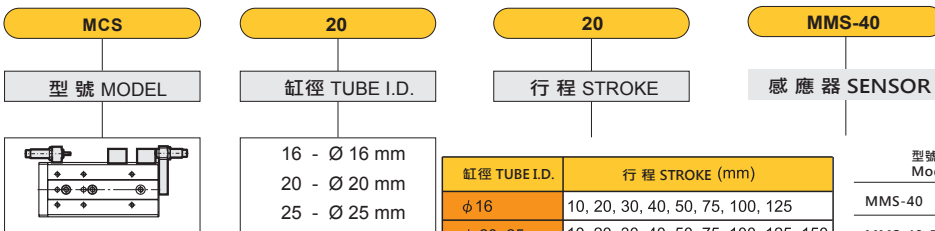
### 緩衝裝置 Cushion



### 油壓緩衝 Shock absorber

- 油壓緩衝能吸收行程的衝擊而很平順的停止
- Absorbs the collision at stroke end and stops smoothly.

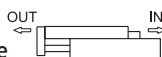
### 訂購代號 How to code



缸徑 TUBE I.D.	行程 STROKE (mm)
φ 16	10, 20, 30, 40, 50, 75, 100, 125
φ 20, 25	10, 20, 30, 40, 50, 75, 100, 125, 150

型號 Model	型式 Description	建議使用數量 Recom. number of use
MMS-40	直行設計(兩線無接點) Straight design (two-line non-contact)	2
MMS-40-PNP	直行設計(兩線無接點) Straight design (two-line non-contact)	2
MMS-40-NPN	直行設計(兩線無接點) Straight design (two-line non-contact)	2

### 理論出力表 Theoretical force



(單位: N)

內徑 Tube I.D. (mm)	活塞桿徑 Piston rod (mm)	動作方向 Operating direction	受壓面積 Piston area (mm <sup>2</sup> )	使用壓力 Operating pressure (MPa)						
				0.2	0.3	0.4	0.5	0.6	0.7	
16	8	OUT	402	80	121	161	201	241	281	
		IN	302	60	91	121	151	181	211	
20	10	OUT	628	126	188	251	314	377	400	
		IN	471	94	141	188	236	283	330	
25	12	OUT	982	196	295	393	491	589	687	
		IN	756	151	227	302	378	454	529	

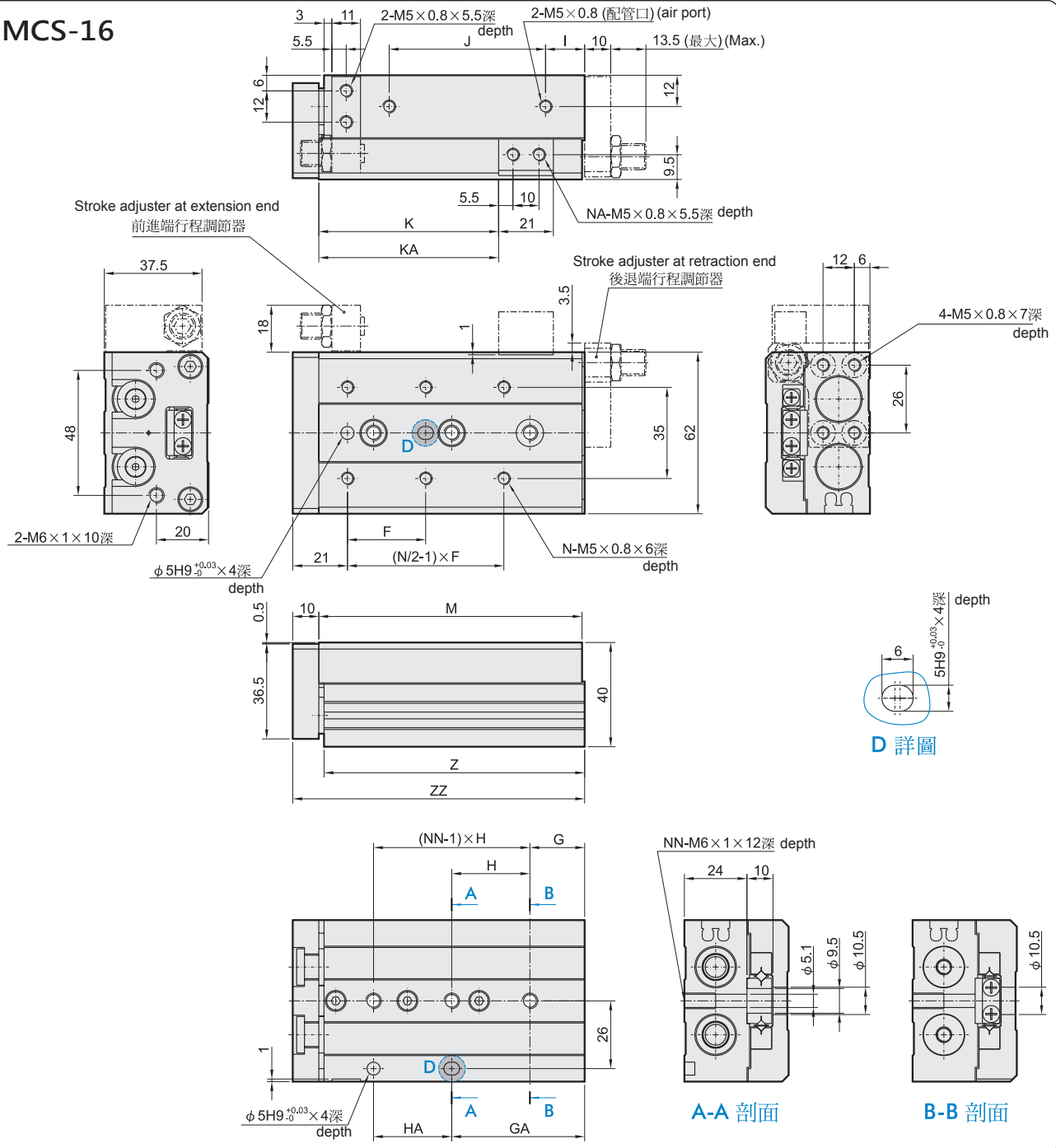
### 重量 Cylinder weight

單位 (unit: g)

Stroke (mm)	內徑 Tube I.D.		
	φ 16	φ 20	φ 25
10	576	1050	1636
20	604	1060	1650
30	602	1092	1673
40	674	1145	1797
50	762	1320	1989
75	1095	1815	2713
100	1410	2365	3260
125	1702	2880	4260
150	—	3368	4530

# 外觀尺寸圖 Dimensions

## MCS-16

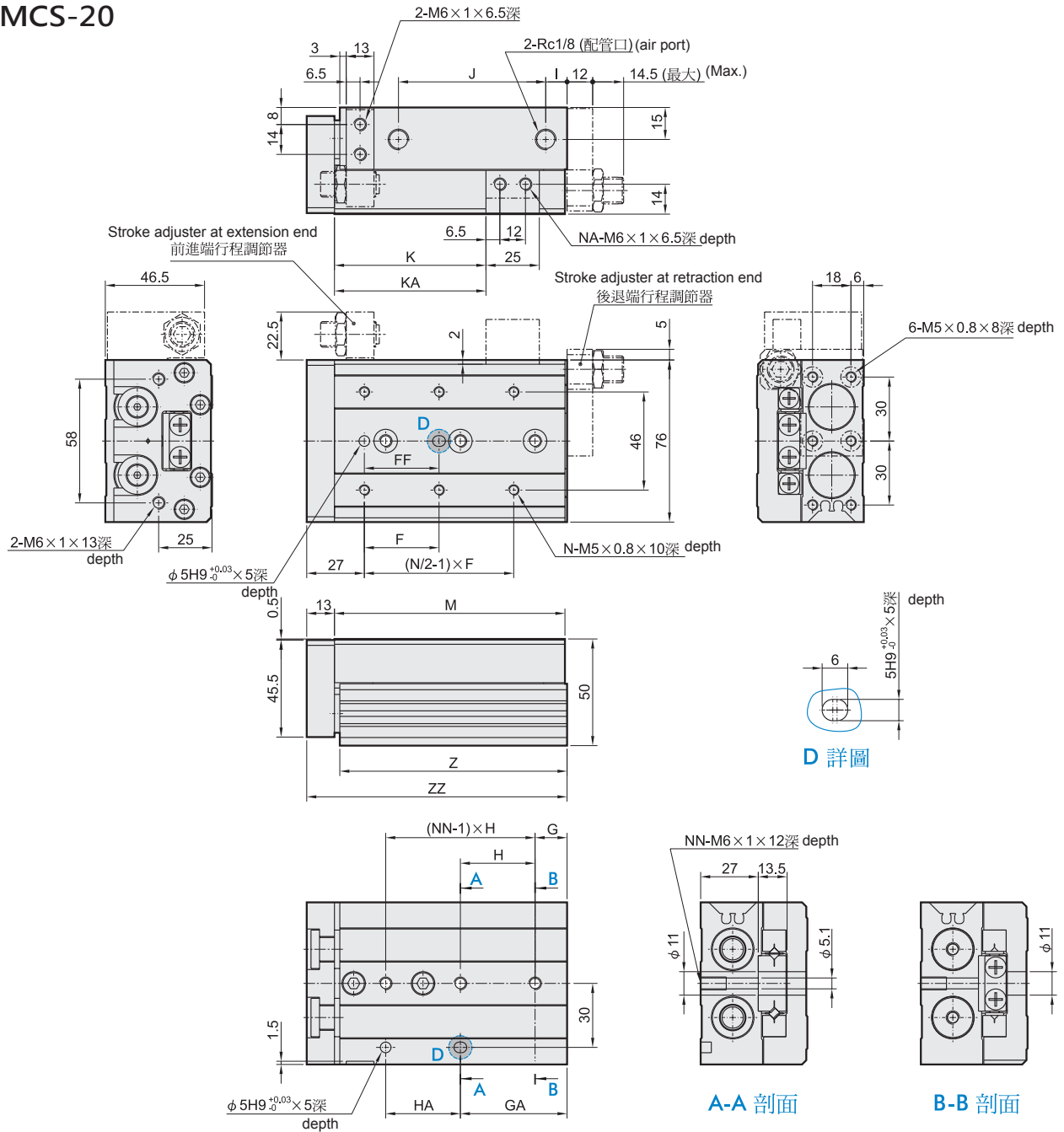


MCS

代號 行程	F	G	GA	H	HA	I	J	K	KA	M	N	NA	NN	Z	ZZ
10	35	16	16	40	40	10	40	29	-	76	4	2	2	75	87
20	35	16	16	40	40	10	40	39	-	76	4	2	2	75	87
30	35	16	16	40	40	10	40	49	-	76	4	2	2	75	87
40	40	16	16	50	50	10	50	59	-	86	4	2	2	85	97
50	30	21	51	30	30	15	60	69	-	101	6	2	3	100	112
75	55	26	61	35	70	40	85	94	125	151	6	4	4	150	162
100	65	39	109	35	70	55	118	119	173	199	6	4	5	198	210
125	70	19	159	35	70	68	155	144	223	249	8	4	7	248	260

### 外觀尺寸圖 Dimensions

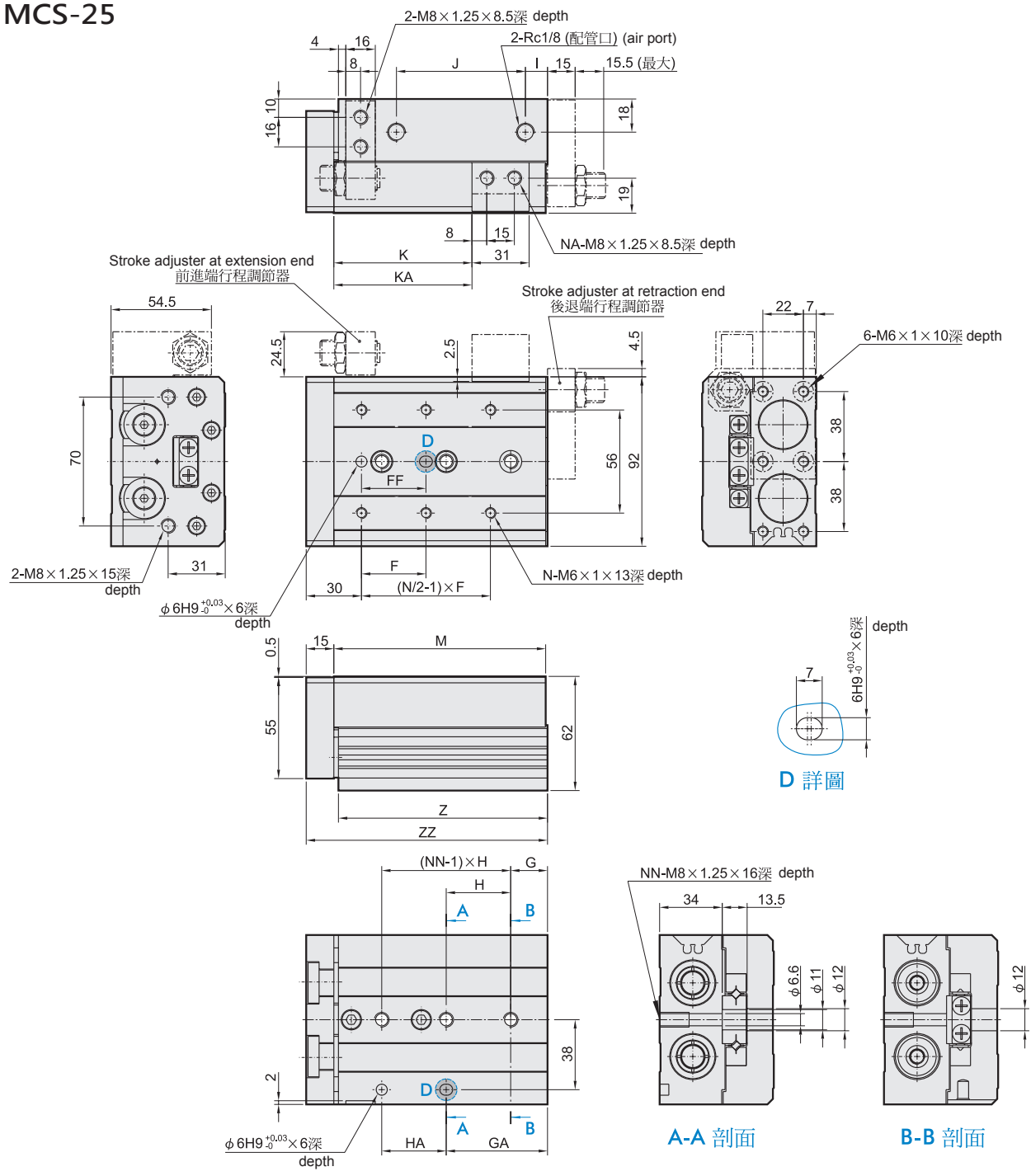
#### MCS-20



代號 行程	F	FF	G	GA	H	HA	I	J	K	KA	M	N	NA	NN	Z	ZZ
10	50	40	15	25	45	35	10	44	31	-	83	4	2	2	81.5	97
20	50	40	15	25	45	35	10	44	41	-	83	4	2	2	81.5	97
30	50	40	15	25	45	35	10	44	51	-	83	4	2	2	81.5	97
40	60	50	15	35	55	35	10	54	61	-	93	4	2	2	91.5	107
50	35	35	15	50	35	35	10	69	71	-	108	6	2	3	106.5	122
75	60	60	19	54	35	70	10	108	96	-	147	6	2	4	145.5	161
100	70	70	37	107	35	70	58	113	121	169	200	6	4	5	198.5	214
125	70	70	41	155	38	76	70	155	146	223	254	8	4	6	252.5	268
150	80	80	19	195	44	88	87	190	171	275	306	8	4	7	304.5	320

# 外觀尺寸圖 Dimensions

## MCS-25

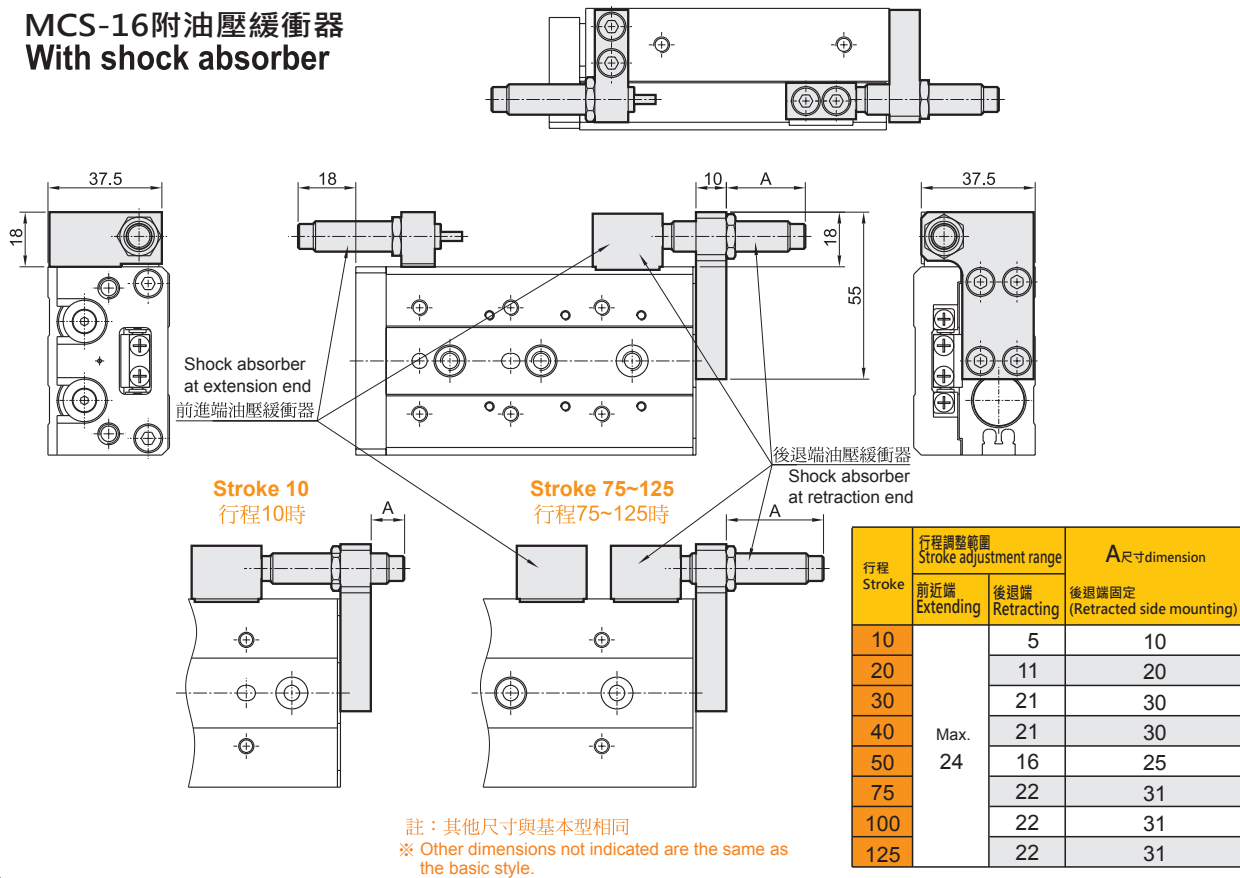


代號 行程	F	FF	G	GA	H	HA	I	J	K	KA	M	N	NA	NN	Z	ZZ
10	50	40	22	22	45	45	12	47	35	-	92	4	2	2	90.5	108
20	50	40	22	22	45	45	12	47	45	-	92	4	2	2	90.5	108
30	50	40	22	22	45	45	12	47	55	-	92	4	2	2	90.5	108
40	60	50	22	22	55	55	12	57	65	-	102	4	2	2	100.5	118
50	35	35	20	55	35	35	12	70	75	-	115	6	2	3	113.5	131
75	60	60	26	61	35	70	33	90	100	-	156	6	2	4	154.5	172
100	70	70	32	102	35	70	50	114	125	162	197	6	4	5	195.5	213
125	75	75	40	154	38	76	67	155	150	218	255	8	4	6	253.5	271
150	80	80	30	190	40	80	82	180	175	258	295	8	4	7	293.5	311

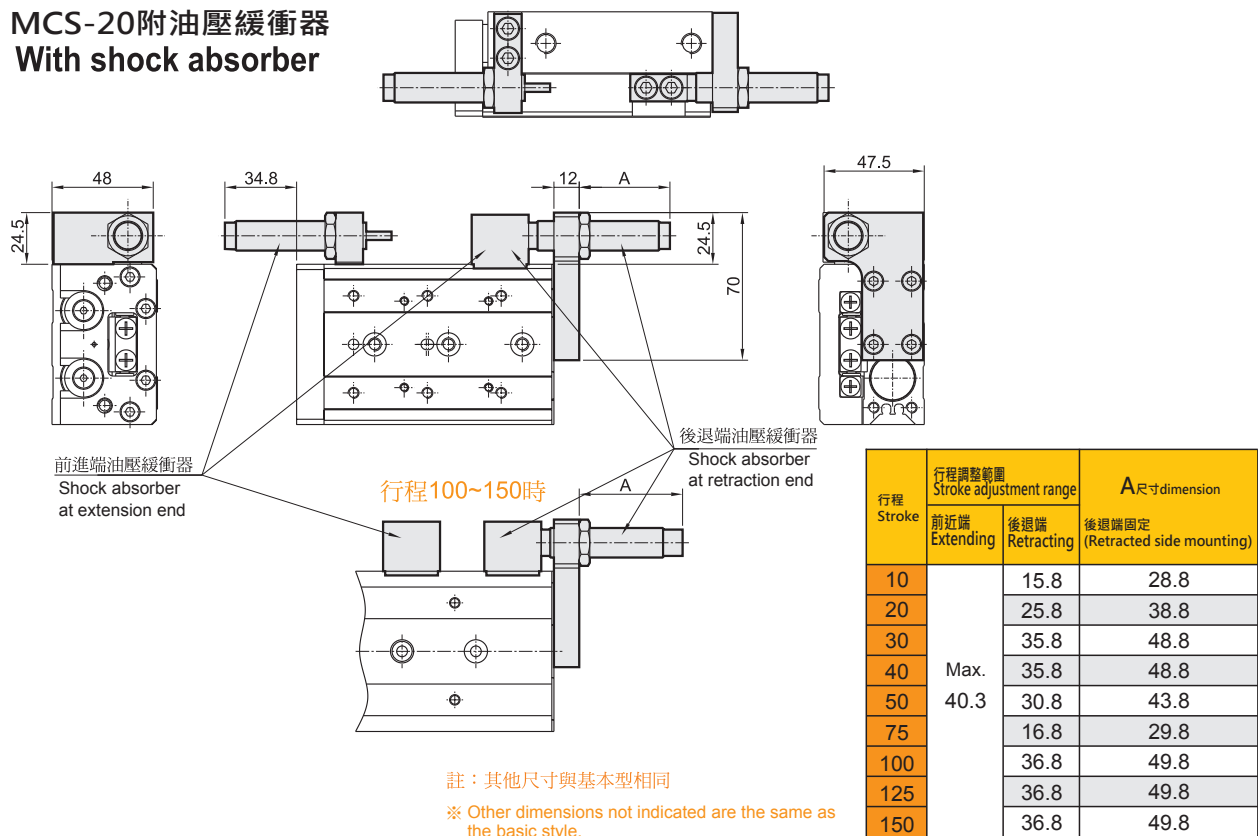
MCS

### 外觀尺寸圖 Dimensions

#### MCS-16附油壓緩衝器 With shock absorber

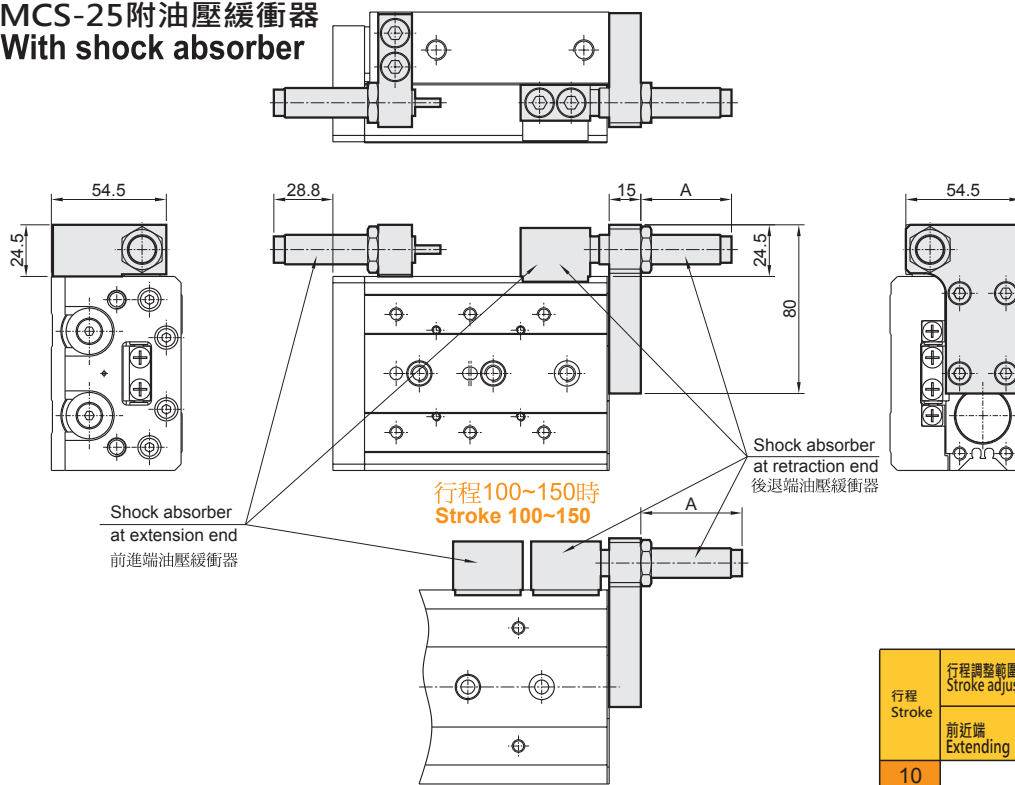


#### MCS-20附油壓緩衝器 With shock absorber



### 外觀尺寸圖 Dimensions

#### MCS-25附油壓緩衝器 With shock absorber



行程 Stroke	行程調整範圍 Stroke adjustment range		A尺寸dimension
	前近端 Extending	後退端 Retracting	後退端固定 (Retracted side mounting)
10	Max. 36.3	12.8	26.8
20		22.8	36.8
30		32.8	46.8
40		32.8	46.8
50		29.8	43.8
75		13.8	27.8
100		34.8	48.8
125		32.8	46.8
150	32.8	46.8	

註：其他尺寸與基本型相同  
※ Other dimensions not indicated are the same as the basic style.