

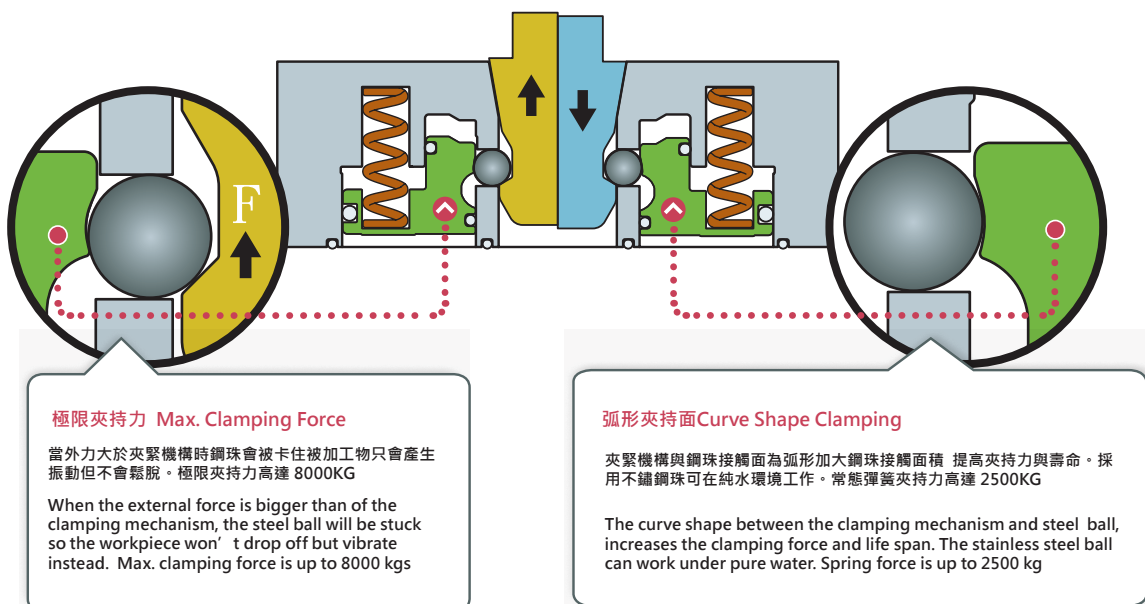
 **NSE-120**



### 技術資料 Technical data

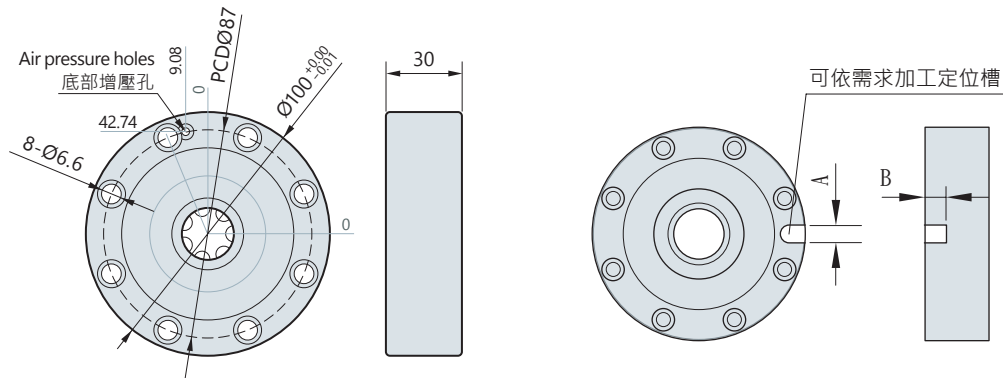
本體型號 Model		<b>NSE-120</b>
氣壓增壓夾持力 Air pressure clamping force	KG	3500
彈簧夾持力 Spring force	KG	2500
最大/小壓力 Min./max. operating pressure compressed air	bar	4/8
最小/最大溫度 Min./max. temperature	°C	15° - 60°C
重複精度 Repeat accuracy	mm	0.005
材質 Material	stainless steel	不鏽鋼 stainless steel
重量 Weight	KG	1.4

### ● 零點氣動夾頭結構圖解 Zero-point Chuck Diagram



## 外觀尺寸圖 Dimensions

### NSE-120



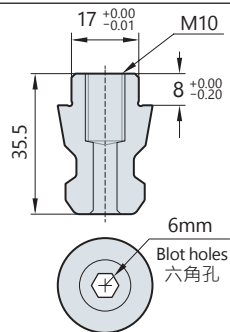
### ● 零點拉桿的使用與安裝 Drawbar for Zero-Point Chuck

三種拉桿的組合運用，托盤。可不受溫度影響位移、加工中心保持不變。NSE-120零點夾頭和拉桿之間的公差、必需控制在  $\pm 0.01\text{mm}$  內。

The combination of these three drawbars can keep the centering point at the same position, and have the pallet out of moving from the effects of thermal expansion and contraction. The tolerance between zero-point chuck and drawbars must be controlled within  $\pm 0.01\text{mm}$ .

#### NSE-17B

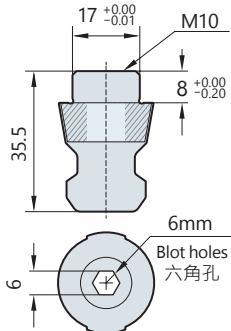
基準拉桿  
Centering drawbar



- 主要作用限制 X,Y 軸向不可移動 並做為加工基準點。
- It positions the pallet in one axis only and is capable of slightly move for the other axis.
- 材質：高硬度不鏽鋼。
- Material : High hardness staliness steel

#### NSE-17L

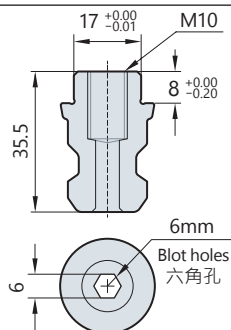
定向拉桿  
Compensation drawbar



- 主要作用限制單軸向不可移動另一軸向可微量移動。
- It positions the pallet in one axis only and is capable of slightly move for the other axis.
- 材質：高硬度不鏽鋼。
- Material : High hardness staliness steel

#### NSE-17H

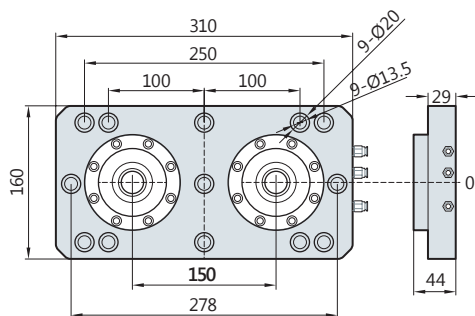
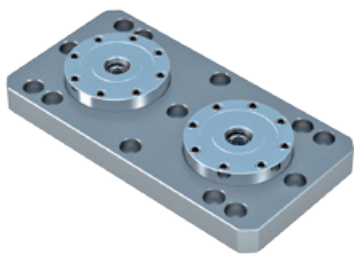
夾緊拉桿  
Chucking drawbar



- 主要作用Z軸向夾緊X,Y 軸向可微量移動。
- It mainly clamps toward Z axis and allow the X and Y axis with slightly move.
- 材質：高硬度不鏽鋼。
- Material : High hardness staliness steel

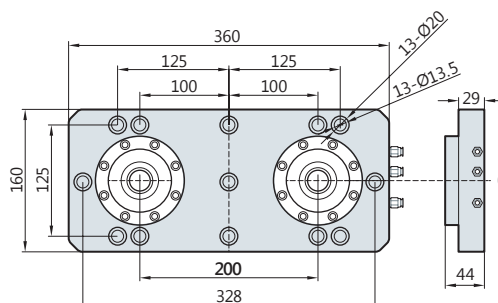
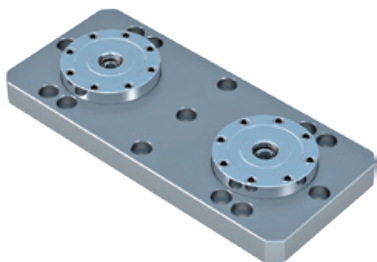
### ● 零點氣壓夾頭定位板 Base Plate With Zero-Point Chuck

#### ● NSE-150 2夾頭零點定位板組 Base Plate With Zero-Point Chuck × 2 Sets



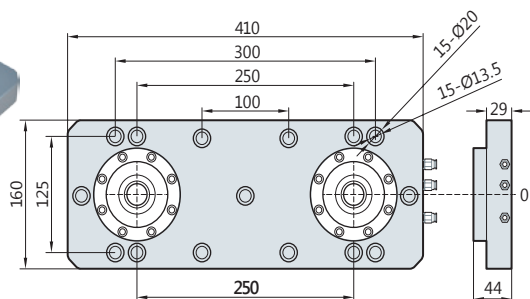
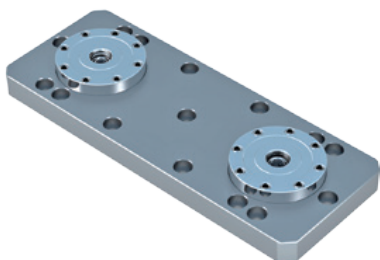
- 供T型槽寬100/125mm使用。
- 鋼製基板 硬度HRC 28°±3°
- 夾持力 2500kgs × 2
- 增壓鎖緊 3500kgs × 2
- 中心孔吹氣功能
- 規格外可訂製
- Suitable for T slot 100/125mm
- Steel base plate with 28°±3° HRC
- Clamping force 2500kgs × 2
- Clamping power with reclamping 3500kgs × 2
- Center hole with cleaning function
- Custom-made spec. is available

#### ● NSE-200 2夾頭零點定位板組 Base Plate With Zero-Point Chuck × 2 Sets



- 供T型槽寬100/125mm使用。
- 鋼製基板 硬度HRC 28°±3°
- 夾持力 2500kgs × 2
- 增壓鎖緊 3500kgs × 2
- 中心孔吹氣功能
- 規格外可訂製
- Suitable for T slot 100/125mm
- Steel base plate with 28°±3° HRC
- Clamping force 2500kgs × 2
- Clamping power with reclamping 3500kgs × 2
- Center hole with cleaning function
- Custom-made spec. is available

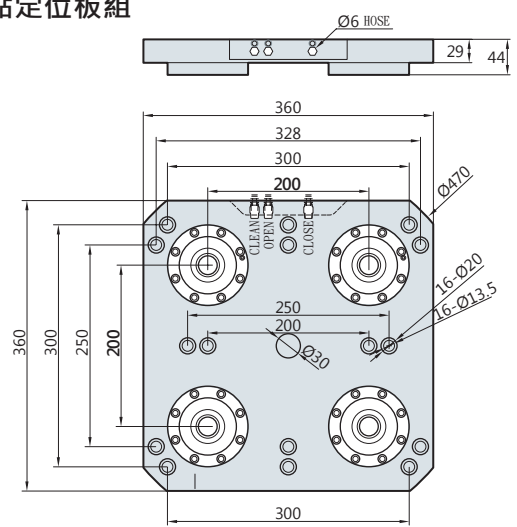
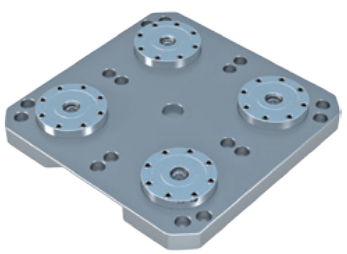
#### ● NSE-250 2夾頭零點定位板組 Base Plate With Zero-Point Chuck × 2 Sets



- 供T型槽寬100/125mm使用。
- 鋼製基板 硬度HRC 28°±3°
- 夾持力 2500kgs × 2
- 增壓鎖緊 3500kgs × 2
- 中心孔吹氣功能
- 規格外可訂製
- Suitable for T slot 100/125mm
- Steel base plate with 28°±3° HRC
- Clamping force 2500kgs × 2
- Clamping power with reclamping 3500kgs × 2
- Center hole with cleaning function
- Custom-made spec. is available

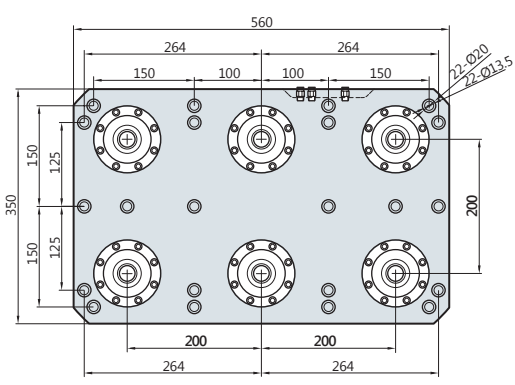
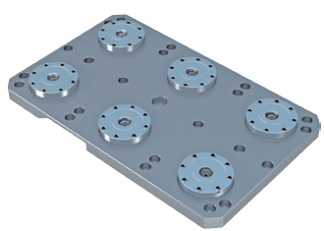
### ● 零點氣壓夾頭定位板 Base Plate With Zero-Point Chuck

#### ● NSE-42020 4夾頭零點定位板組 Base Plate With Zero-Point Chuck × 4 Sets



- 供T型槽寬100/125mm使用。
- 鋼製基板 硬度HRC 28°±3°
- 夾持力 2500kgs × 4
- 增壓鎖緊 3500kgs × 4
- 中心孔吹氣功能
- 規格外可訂製
- Suitable for T slot 100/125mm
- Steel base plate with 28°±3° HRC
- Clamping force 2500kgs × 4
- Clamping power with reclamping 3500kgs × 4
- Center hole with cleaning function
- Custom-made spec. is available

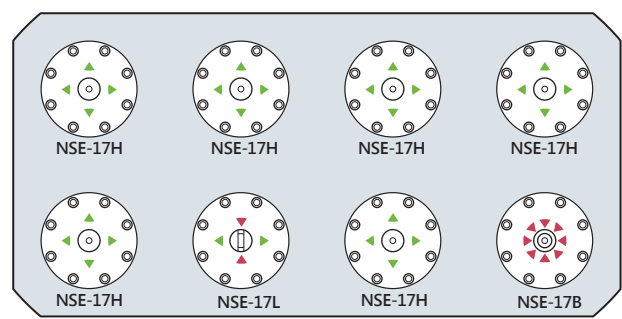
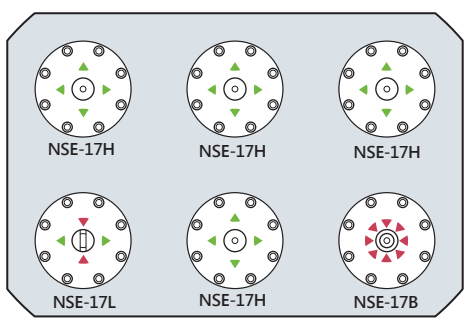
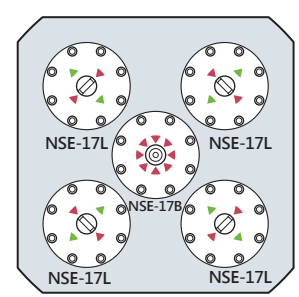
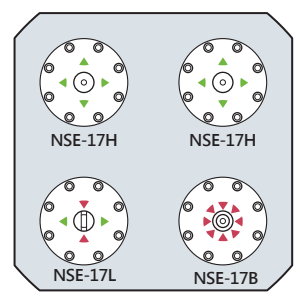
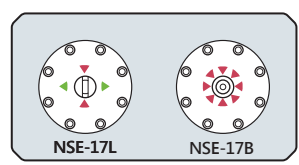
#### ● NSE-62020 6夾頭零點定位板組 Base Plate With Zero-Point Chuck × 6 Sets



- 供T型槽寬100/125mm使用。
- 鋼製基板 硬度HRC 28°±3°
- 夾持力 2500kgs × 4
- 增壓鎖緊 3500kgs × 4
- 中心孔吹氣功能
- 規格外可訂製
- Suitable for T slot 100/125mm
- Steel base plate with 28°±3° HRC
- Clamping force 2500kgs × 4
- Clamping power with reclamping 3500kgs × 4
- Center hole with cleaning function
- Custom-made spec. is available

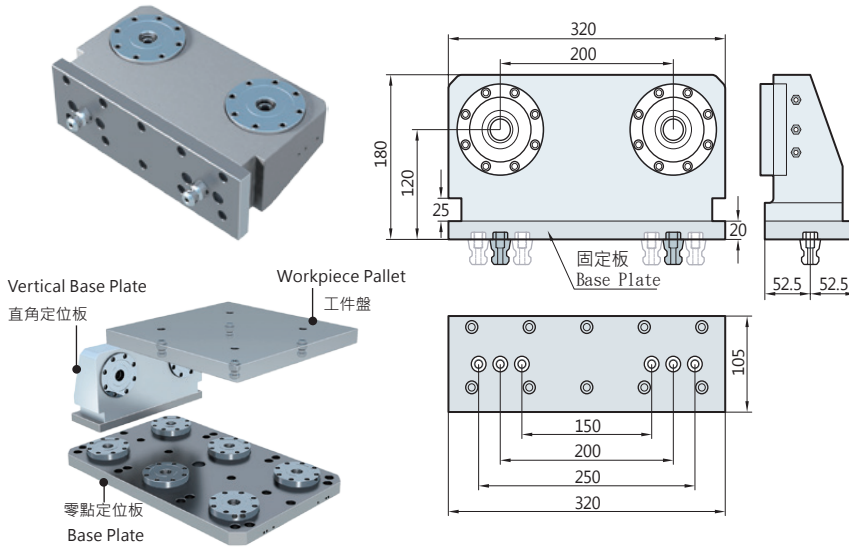
NSE

#### ● 零點拉桿的使用與安裝方式 Drawbar for Zero-Point Chuck



### ● 零點氣壓夾頭定位板組 Vertical Base Plate With Zero-Point Chuck

#### ● NSE-200L 2夾頭直角定位板組 2 collet right angle locating plate group



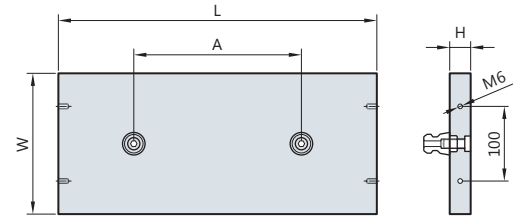
- 材質：夾頭座本體高強度鋁合金
- 固定板鋼製 硬度HRC 28°±3°
- 夾持力 2500kgs × 2
- 增壓鎖緊 3500kgs × 2
- 中心孔吹氣功能
- 可用虎鉗夾持，磁盤吸著或鎖固在床臺上
- 規格外可訂製
- Suitable for T slot 100/125mm
- Steel base plate with 28°±3° HRC
- Clamping force 2500kgs × 2
- Clamping power with reclamping 3500kgs × 2
- Center hole with cleaning function
- It can work with Vise, Magnetic Chuck or be fixed on the machine table.
- Custom-made spec. is available

### ● 工件盤 Workpiece Pallet

#### ● NSE-150~250A 工件盤 Workpiece Pallet for Zero-Point Chuck × 2 Sets

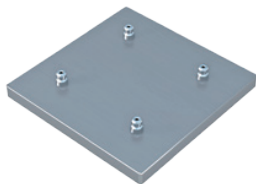
TYPE	A	H	L	W
NSE-150A	150	30	330	168
NSE-200A	200	30	380	198
NSE-250A	250	30	430	198

- 附拉桿 Standard Accessory
- 基準拉桿 NSE-17B × 1
- 定向拉桿 NSE-17L × 1
- 材質：高強度鋁合金

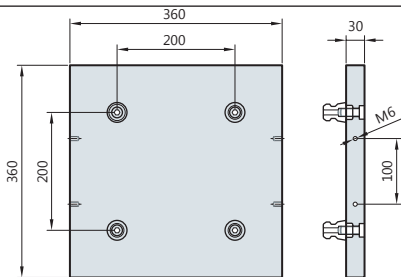


- 可根據您的需求、材質、尺寸、孔/螺牙作加工 Custom-made available. (Incl. material, spec., hole/screw thread)

#### ● NSE-4360A 工件盤 Workpiece Pallet for Zero-Point Chuck × 4 Sets

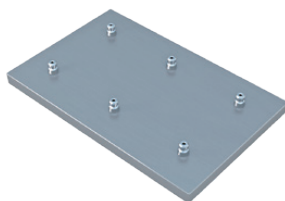


- 附拉桿 Standard Accessory
- 基準拉桿 NSE-17B × 1
- 定向拉桿 NSE-17L × 1
- 夾緊拉桿 NSE-17H × 2
- 材質：高強度鋁合金

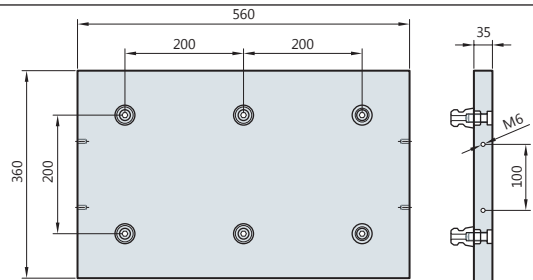


- 可根據您的需求、材質、尺寸、孔/螺牙作加工 Custom-made available. (Incl. material, spec., hole/screw thread)

#### ● NSE-6560A 工件盤 Workpiece Pallet for Zero-Point Chuck × 6 Sets



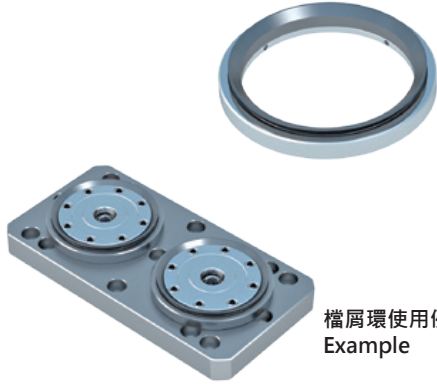
- 附拉桿 Standard Accessory
- 基準拉桿 NSE-17B × 1
- 定向拉桿 NSE-17L × 1
- 夾緊拉桿 NSE-17H × 4
- 材質：高強度鋁合金



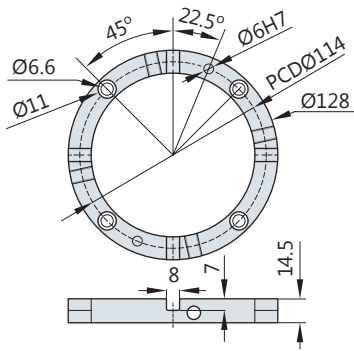
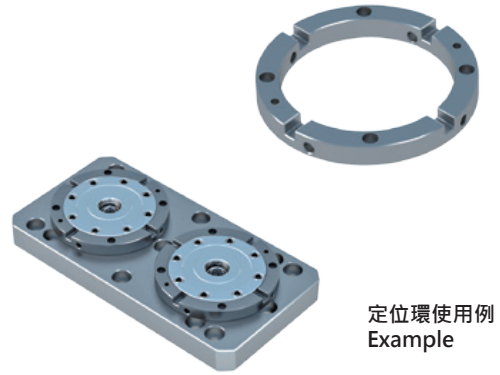
- 可根據您的需求、材質、尺寸、孔/螺牙作加工 Custom-made available. (Incl. material, spec., hole/screw thread)

## ● 擋屑環及定位環 Chip Cover Ring Positioning Ring

### ● NSE-1003 擋屑環 Chip Cover Ring



### ● NSE-1004 定位環 Positioning Ring



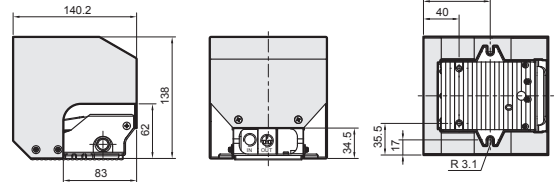
- 於單顆使用時定位托盤方向。
- 高硬度不鏽鋼、硬度HRC 52°
- 規格外可訂製
- When using the chuck singly, it can help to positon the direction of pallet.
- Stainless Steel with 52 HRC
- Custom-made spec. is available

## ● 週邊配件 Peripheral accessories

### ● 腳踏閥 Foot Switch - RVFA-230



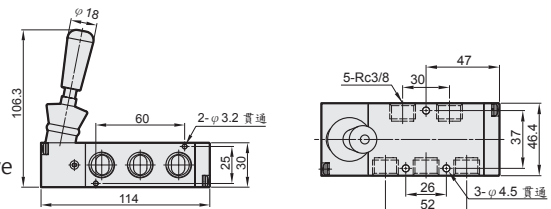
- 氣壓用五口二位機械閥。
- 配管尺寸 PT1/4
- 彈簧回拉
- 5/2 Way Mechanical Valve
- Port Size: 1/4"
- Spring return operation, with foot guard.



### ● 手動閥 Hand Control Valve - RVHB-300



- 氣壓用五口二位機械閥。
- 配管尺寸 PT1/8
- 5/2 Way Mechanical Valve
- Port Size: 1/8"



### ● 過濾調壓模組(兩點組合) - RAFR-300



- 最大流量 2080 liter/min (ANR)
- 配管尺寸 PT1/4
- 最大耐壓 9.9 kgf/cm<sup>2</sup>
- 環境溫度 -10oC ~ 60oC

