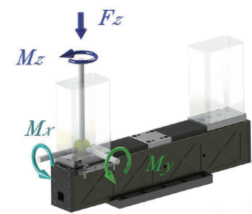




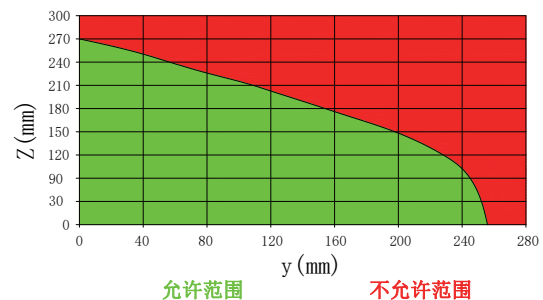
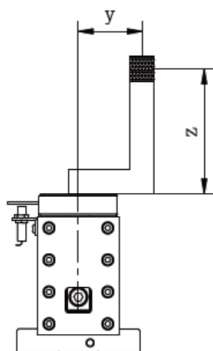
	夾緊靜荷載	開閉動荷載
Mx max.	70.0 Nm	17.5 Nm
My max.	110.0 Nm	17.5 Nm
Mz max.	90.0 Nm	-----
Fz max.	1300.0 N	70.0 N



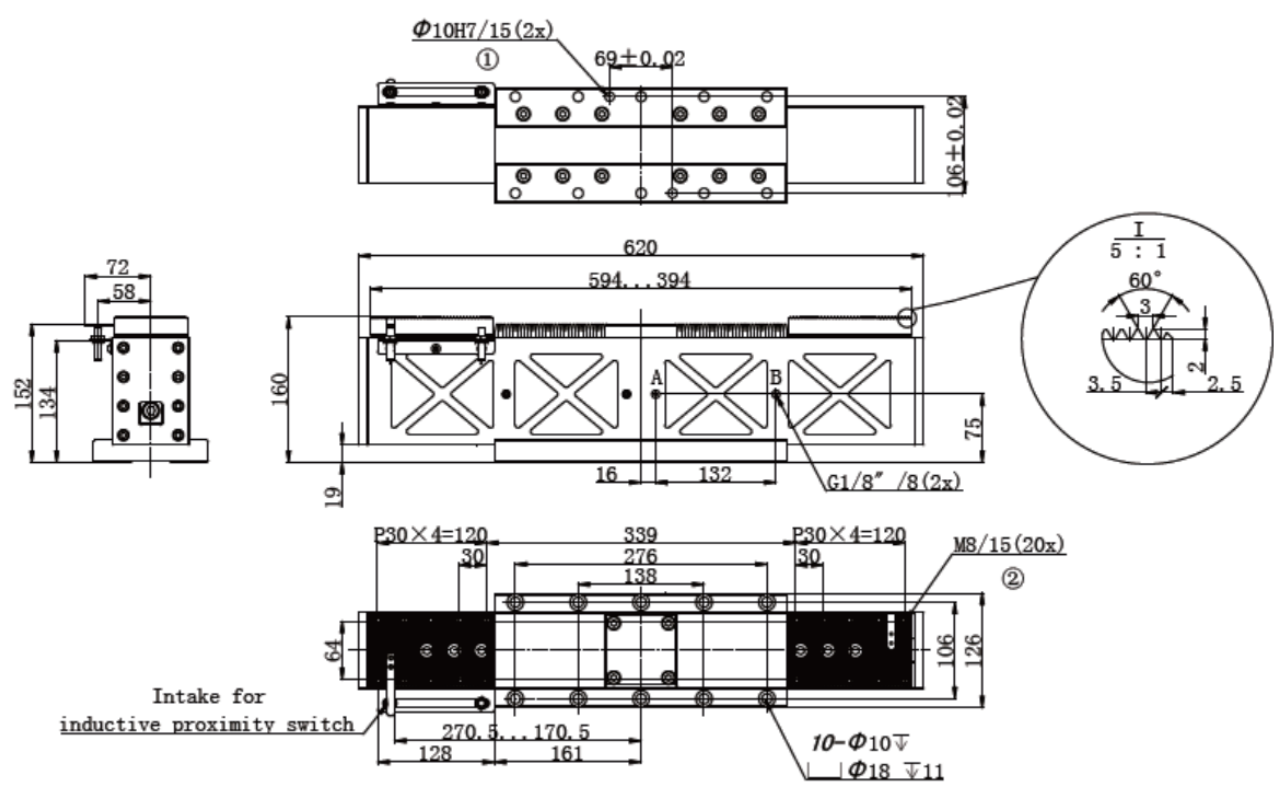
技術資料 Technical data

型號 Model	RFH-200	
單爪行程 Stroke per jaw	mm	100
關閉力 Closing force	N	3588
開啟力 Opening force	N	3330
關閉/開啟時間 Closing/opening Time	s	0.8/0.8
最小壓力 Min. pressure	bar	2
最大壓力 Max. pressure	bar	8
最小/最大溫度 Min. /max. temperature	°C	5 - 60
重量 Weight	Kg	22
最大軟爪長度 Max. permitted finger length	mm	250
單個軟爪最大重量 Max. permitted weight per finger	Kg	7
IP 等級/IP class	IP	45

手指(軟爪)最大允許偏心率/ Maximum permitted finger projection



外觀尺寸圖 Dimensions



A · a 手爪張開主/直接連接進氣 A · a Main/direct connection, gripper opening

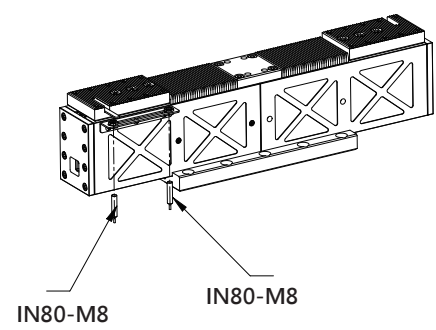
B · b 手爪閉合主/直接連接進氣 B · b Main/direct connection, gripper closing

1. 機械手臂連接處 Robot arm connection

2. 手指(軟爪)連接處 Finger (soft paw) connection

RFH

近接型感測器



終端位置監測 · 近接型感測器
End position monitoring, proximity sensor

型號 model	建議使用數量 Recommended quantity
IN80-M8	2
IN80-M8-NPN	2
IN80-M8-PNP	2