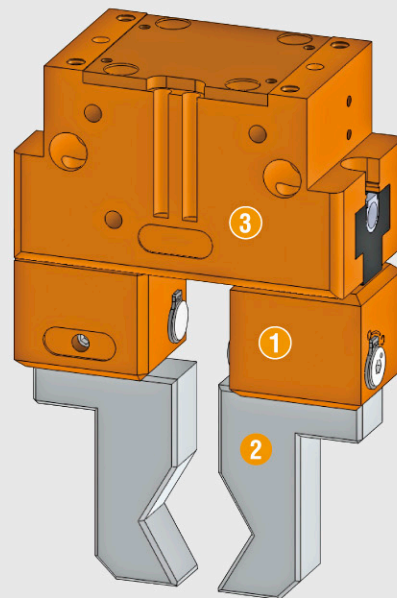


- RSWS快速更換夾爪Finger系統，夾爪頂部Finger可快速手動更換，迅速改變夾爪形式。每一組夾爪需要兩組快速更換基座（RSWS-A）和兩組快速更換連接器（RSWS-B）。
- RSWS finger quick change system, fingers on the top of the gripper can quickly be changed manually, fingers form can easily be changed. 2 sets of quick-change base (RSWS-A) and 2 sets of quick-change connector (RSWS-B) are needed for every gripper.

- RSWS快速換爪系統。
- 手動快速換本體前端夾爪Finger。
- 2種型式：RSWS-A，重覆精度0.02mm。
RSWS-B，重覆精度0.05mm。
- 無需重新校正位置點。
- 適用於RGN-RZN，8種型號50-300。
- RSWS quick change finger system.
- Manual quick change finger.
- Types: RSWS-A, repeatability of 0.02mm.
RSWS-B, repeatability of 0.05mm.
- No need to recalibrate.
- Suitable for RGN-RZN, 8 models 50-300.



- 1 RSWS 快速換爪系統
Quick-change Jaw System RSWS
- 2 RGN客製夾爪
RGN Customized Gripper
- 3 RGN 經典款兩指平動機械夾爪
RGN Classic 2-Jaw Parallel Gripper



你的優勢

- 工廠普遍應用。
- 單一夾爪，可對應自動畫多種變化夾持。
- 方便，快捷的高彈性夾爪。
- 鎖定機構確保夾持的高準度。
- 堅固的基座夾爪能確保高載重能力。
- 通過安全的適應，並用螺絲連接。

Your advantage

- Factories use commonly.
- One gripper can apply to many changes of gripping in automatic application.
- Easy and fast high elastic gripper.
- Locking mechanism ensures high accuracy in gripping.
- Sturdy base, ensures high load capacity.
- Adaptation by security, and with a screw connection.

應用領域

- 適用頻繁更換夾爪Finger。
- 在乾淨的自動化生產線。
- 注意：鎖定表面必須保持無油脂和油！

Applications

- Best for grippers which often change fingers.
- Clean automatic production lines.
- Note: The locking surface must be kept free of grease and oil !

RSWS 系列簡介

- 外殼材質：鋁合金硬質陽極氧化
- 鎖定裝置的材料：鋼
- 保固：12個月
- 尺寸：RGN RZN 50至300均可使用

RSWS Series Introduction

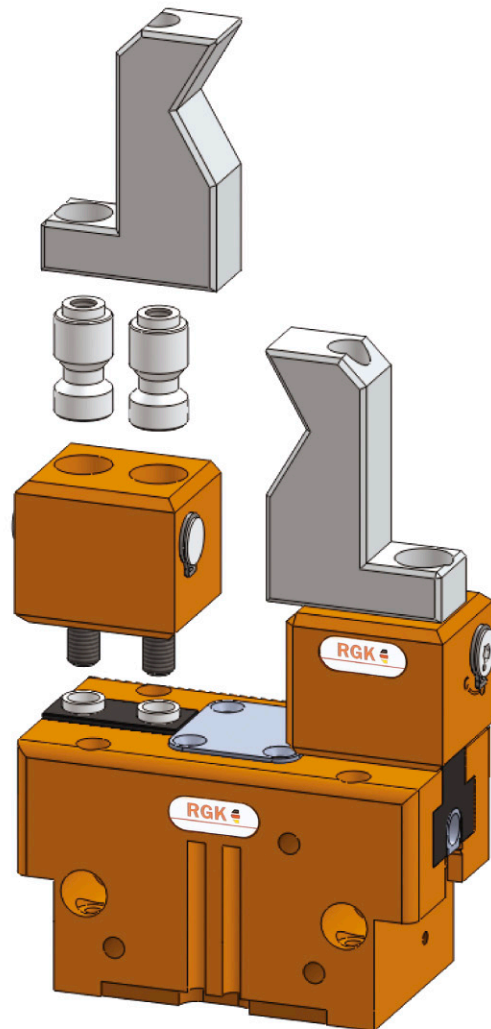
- Material: Aluminum hard anodizing
- Locking device material: Steel
- Warranty: 12 months
- Size: For RGN RZN 50~300

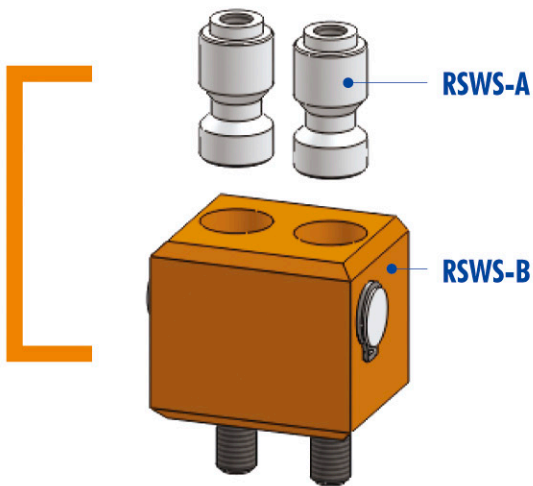
功能描述

快速更換基座（RSWS-A）固定於機械夾爪連接處，兩個快速更換連接器（RSWS-B）固定夾爪Finger。安裝時，將帶有快速更換連接器（RSWS-B）的夾爪插入快速更換基座（RSWS-A），使用工具六角板手，將鎖定機制旋轉到指定位，完成更換。

Function description

Quick-change base (RSWS-A) is fixed at the joints of gripper, 2 sets of quick-change connector (RSWS-B) are used to fix gripper finger.





- 鎖固機構 Locking mechanics
使用螺絲鎖固 Powerful and rigid by positive locking
- 使用螺絲鎖固 Fastened with screws
在夾爪基爪部分固定 Towards the gripper base jaw
- RSWS-B基座 Base RSWS-B
快速換爪機構 The Quick-change jaw system
- RSWS-A 連接板 Adapter plate with RSWS-A
前端鎖固的Finger可更換
To be fastened at the top jaws which will be changed

快速更換基座 Quick-change base RSWS-A

型號 Model	RSWS-A 50	RSWS-A 66	RSWS-A 80	RSWS-A 100	RSWS-A 125	RSWS-A 160	RSWS-A 200	RSWS-A 300
重量 Weight kg	0.002	0.005	0.011	0.024	0.046	0.077	0.16	0.3
針數 Number of pins per ID	2	2	2	2	2	2	2	2

快速更換連結器 Quick-change connector RSWS-B

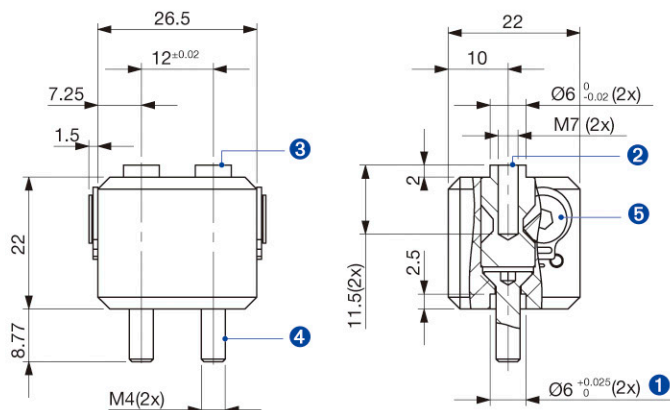
型號 Model	RSWS-B 50	RSWS-B 66	RSWS-B 80	RSWS-B 100	RSWS-B 125	RSWS-B 160	RSWS-B 200	RSWS-B 300
重量 Weight kg	0.02	0.04	0.08	0.1	0.27	0.48	0.9	1.5

備註：一組RSWS-B內有兩支連接器 (適用於RSWS-A一組)

Note: A set of RSWS-B has two connectors (for a set of RSWS-A)

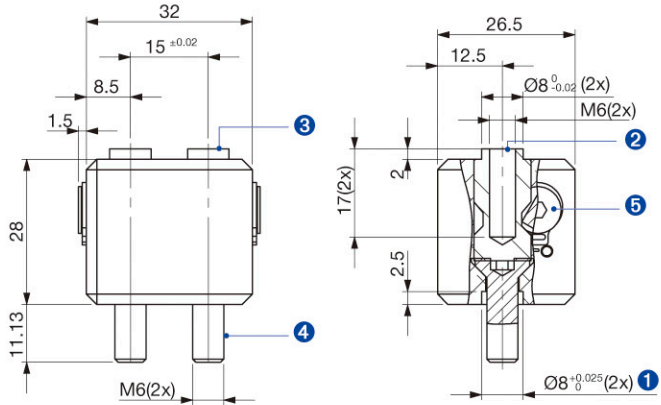
RSWS-66

- ① 機械手主件連接介面
 - ② 夾爪連接介面
 - ③ 夾爪Finger安裝螺絲連接介面
 - ④ 夾爪本體安裝螺絲連接介面
 - ⑤ 鎖固機構
- ① Robot main pieces connection interface.
② Fingers connection interface.
③ Finger mounting screw connection interface.
④ Gripper body mounting screw connection interface.
⑤ Locking mechanism.



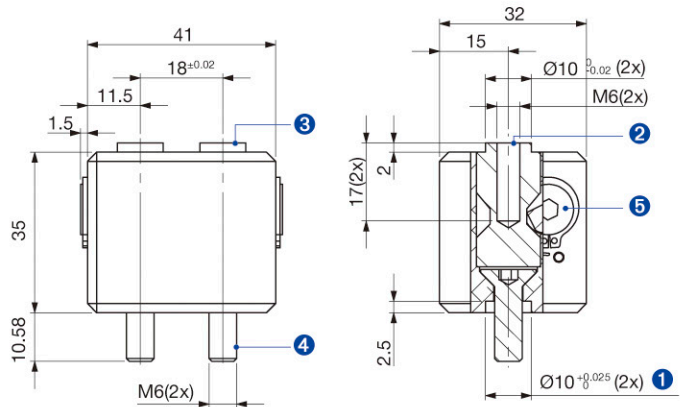
RSWS-80

- ① 機械手主件連接介面
 - ② 夾爪連接介面
 - ③ 夾爪Finger安裝螺絲連接介面
 - ④ 夾爪本體安裝螺絲連接介面
 - ⑤ 鎖固機構
- ① Robot main pieces connection interface.
 - ② Fingers connection interface.
 - ③ Finger mounting screw connection interface.
 - ④ Gripper body mounting screw connection interface.
 - ⑤ Locking mechanism.



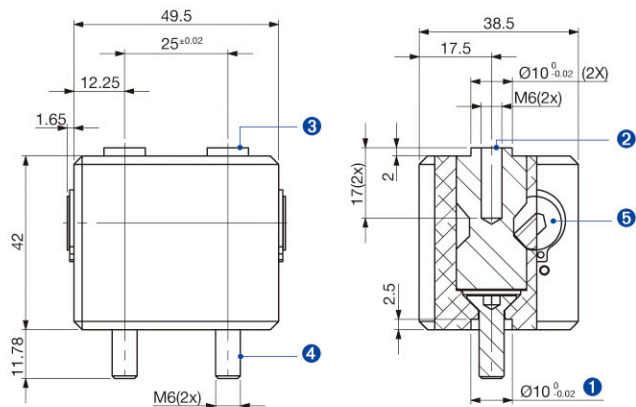
RSWS-100

- ① 機械手主件連接介面
 - ② 夾爪連接介面
 - ③ 夾爪Finger安裝螺絲連接介面
 - ④ 夾爪本體安裝螺絲連接介面
 - ⑤ 鎖固機構
- ① Robot main pieces connection interface.
 - ② Fingers connection interface.
 - ③ Finger mounting screw connection interface.
 - ④ Gripper body mounting screw connection interface.
 - ⑤ Locking mechanism.



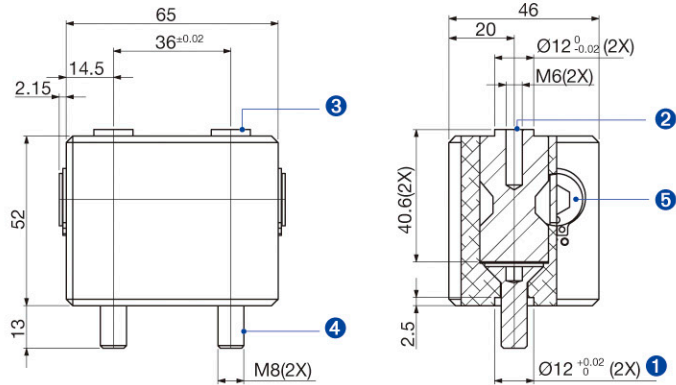
RSWS-125

- ① 機械手主件連接介面
 - ② 夾爪連接介面
 - ③ 夾爪Finger安裝螺絲連接介面
 - ④ 夾爪本體安裝螺絲連接介面
 - ⑤ 鎖固機構
- ① Robot main pieces connection interface.
 - ② Fingers connection interface.
 - ③ Finger mounting screw connection interface.
 - ④ Gripper body mounting screw connection interface.
 - ⑤ Locking mechanism.



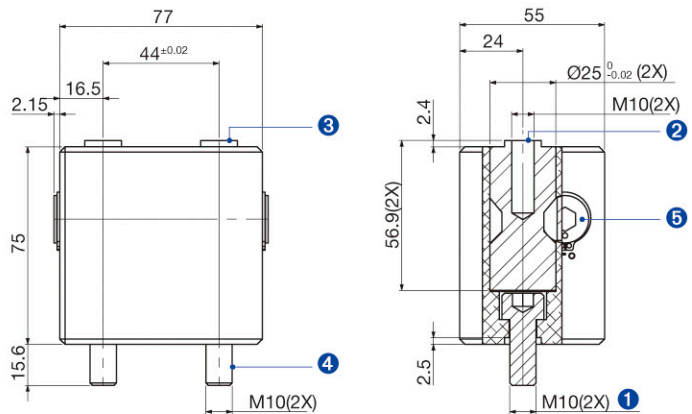
RSWS-160

- ① 機械手主件連接介面
 - ② 夾爪連接介面
 - ③ 夾爪Finger安裝螺絲連接介面
 - ④ 夾爪本體安裝螺絲連接介面
 - ⑤ 鎖固機構
- ① Robot main pieces connection interface.
 - ② Fingers connection interface.
 - ③ Finger mounting screw connection interface.
 - ④ Gripper body mounting screw connection interface.
 - ⑤ Locking mechanism.



RSWS-200

- ① 機械手主件連接介面
 - ② 夾爪連接介面
 - ③ 夾爪Finger安裝螺絲連接介面
 - ④ 夾爪本體安裝螺絲連接介面
 - ⑤ 鎖固機構
- ① Robot main pieces connection interface.
 - ② Fingers connection interface.
 - ③ Finger mounting screw connection interface.
 - ④ Gripper body mounting screw connection interface.
 - ⑤ Locking mechanism.



RSWS-300

- ① 機械手主件連接介面
 - ② 夾爪連接介面
 - ③ 夾爪Finger安裝螺絲連接介面
 - ④ 夾爪本體安裝螺絲連接介面
 - ⑤ 鎖固機構
- ① Robot main pieces connection interface.
 - ② Fingers connection interface.
 - ③ Finger mounting screw connection interface.
 - ④ Gripper body mounting screw connection interface.
 - ⑤ Locking mechanism.

