



技術資料 Technical data

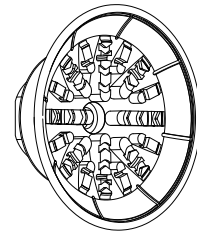
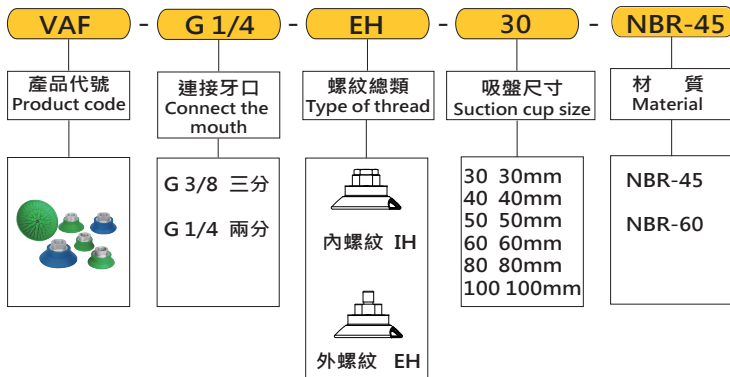
● 介紹及應用 Introduction and application

用於快速搬運金屬薄板(短循環週期適用)
搬運金屬薄板時不會產生凹陷或變形
用於汽車行業沖壓生產線的搬運系統
吸盤底部有特殊凹槽結構,可防止油性金屬板
在搬運過程中滑動,確保工件在壓機裡精確定位
Used to quickly move thin metal sheets (for short cycle periods)
No dents or deformations when handling metal sheets
Handling system for stamping production lines in the automotive industry
The bottom of the suction cup has a special groove structure to prevent oily metal plates
Sliding during handling to ensure precise positioning of the workpiece in the press

● 結構 Structure

採用NBR材質·單密封唇·有特殊的凹槽設計和內部支撐設計
真空吸盤和接頭為硫化固定(高強度材質),吸盤有多種連接形式可選
可供兩種材質硬度供選擇(NBR-45, NBR-60)
NBR material, single sealing lip, special groove design and internal support design
Vacuum suction cups and joints are vulcanized and fixed (high strength material),
The suction cup has a variety of connection options
Available in two materials for hardness (NBR-45, NBR-60)

● 訂購代號 How to code



● 標準尺寸資料 Standard size data

VAF-G1/4-EH-30(NBR-45)
VAF-G1/4-EH-40(NBR-45)
VAF-G1/4-EH-50(NBR-45)
VAF-G1/4-EH-60(NBR-45)
VAF-G1/4-EH-80(NBR-45)
VAF-G1/4-EH-100(NBR-45)
VAF-G1/4-EH-30(NBR-60)
VAF-G1/4-EH-40(NBR-60)
VAF-G1/4-EH-50(NBR-60)
VAF-G1/4-EH-60(NBR-60)
VAF-G1/4-EH-80(NBR-60)
VAF-G1/4-EH-100(NBR-60)

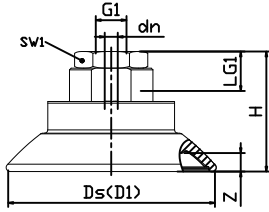
VAF-G1/4-IH-30(NBR-45)
VAF-G1/4-IH-40(NBR-45)
VAF-G1/4-IH-50(NBR-45)
VAF-G1/4-IH-60(NBR-45)
VAF-G1/4-IH-80(NBR-45)
VAF-G1/4-IH-100(NBR-45)
VAF-G1/4-IH-30(NBR-60)
VAF-G1/4-IH-40(NBR-60)
VAF-G1/4-IH-50(NBR-60)
VAF-G1/4-IH-60(NBR-60)
VAF-G1/4-IH-80(NBR-60)
VAF-G1/4-IH-100(NBR-60)

VAF-G3/8-IH-30(NBR-45)
VAF-G3/8-IH-40(NBR-45)
VAF-G3/8-IH-50(NBR-45)
VAF-G3/8-IH-60(NBR-45)
VAF-G3/8-IH-80(NBR-45)
VAF-G3/8-IH-100(NBR-45)
VAF-G3/8-IH-30(NBR-60)
VAF-G3/8-IH-40(NBR-60)
VAF-G3/8-IH-50(NBR-60)
VAF-G3/8-IH-60(NBR-60)
VAF-G3/8-IH-80(NBR-60)
VAF-G3/8-IH-100(NBR-60)

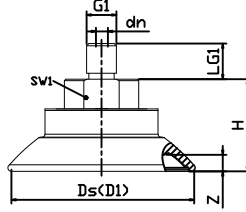
外觀尺寸圖 Dimensions

VAF

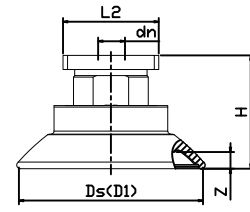
VAF 30 至 100 IH



VAF 30 至 100 EH



VAF 30 至 100 RA(矩形適配器)



型號 Model	吸力 Suction [N]	側向力 Lateral Force [N]	油性表面側向力 Oily Surface Lateral Force [N]	內部體積 Internal volume [cm ³]	工件最小曲率半徑 Workpiece minimum-radius of curvature [mm] (凸形)	推薦軟管直徑 Recommended hose diameter d[mm]
VAF 30	38	30	28	1.7	40	4
VAF 40	69	52	50	3.8	50	4
VAF 50	100	80	76	7.0	65	4
VAF 60	150	105	85	13.0	75	6
VAF 80	272	205	180	36.0	100	6
VAF 100	430	310	300	58.0	135	6

型號 Model	尺寸 Size [mm]									
	d1	dn	Ds	G1	H	LG1	L2	SW1	Z(行程)	
VAF-G1/4-EH-30	34	4	32	G1/4"-M	20.0	10	-	17	3.0	
VAF-G1/4-IH-30	34	4	32	G1/4"-F	20.0	12	-	17	3.0	
VAF-G3/8-IH-30	34	4	32	G3/8"-F	36.0	9	-	22	3.0	
VAF-M10x1.5-EH-30	34	4	32	M10x1.5-M	20.0	12	-	17	3.0	
VAF-M14x1.5-EH-30	34	4	32	M14x1.5-M	22.0	12	-	17	3.0	
VAF-RA-30	34	4	32	-	23.2	-	32	-	3.0	
VAF-G1/4-EH-40	46	4	42	G1/4"-M	22.0	10	-	17	4.0	
VAF-G1/4-IH-40	46	4	42	G1/4"-F	22.0	12	-	17	4.0	
VAF-G3/8-IH-40	46	4	42	G3/8"-F	38.0	9	-	22	4.0	
VAF-M10x1.5-EH-40	46	4	42	M10x1.5-M	22.0	12	-	17	4.0	
VAF-M14x1.5-EH-40	46	4	42	M14x1.5-M	22.0	12	-	17	4.0	
VAF-RA-40	46	4	42	-	25.0	-	32	-	4.0	
VAF-G1/4-EH-50	56	6	52	G1/4"-M	28.0	10	-	22	5.0	
VAF-G1/4-IH-50	56	6	52	G1/4"-F	33.0	15	-	22	5.0	
VAF-G3/8-IH-50	56	6	52	G3/8"-F	28.0	15	-	22	5.0	
VAF-M10x1.5-EH-50	56	4	52	M10x1.5-M	28.0	12	-	22	5.0	
VAF-M14x1.5-EH-50	56	6	52	M14x1.5-M	28.0	12	-	22	5.0	
VAF-RA-50	56	6	52	-	27.5	-	32	-	5.0	
VAF-G1/4-EH-60	67	6	63	G1/4"-M	31.0	10	-	22	6.0	
VAF-G1/4-IH-60	67	6	63	G1/4"-F	36.0	15	-	22	6.0	
VAF-G3/8-IH-60	67	6	63	G3/8"-F	31.0	15	-	22	6.0	
VAF-M10x1.5-EH-60	67	4	63	M10x1.5-M	31.0	12	-	22	6.0	
VAF-M14x1.5-EH-60	67	6	63	M14x1.5-M	31.0	12	-	22	6.0	
VAF-RA-60	67	6	63	-	30.5	-	32	-	6.0	
VAF-G1/4-EH-80	89	6	83	G1/4"-M	35.0	10	-	22	7.6	
VAF-G1/4-IH-80	89	6	83	G1/4"-F	40.0	20	-	22	7.6	
VAF-G3/8-IH-80	89	6	83	G3/8"-F	35.0	15	-	22	7.6	
VAF-M10x1.5-EH-80	89	4	83	M10x1.5-M	35.0	12	-	22	7.6	
VAF-M14x1.5-EH-80	89	6	83	M14x1.5-M	35.0	12	-	22	7.6	
VAF-RA-80	89	6	83	-	34.5	-	32	-	7.6	
VAF-G1/4-EH-100	110	6	103	G1/4"-M	36.0	10	-	22	9.5	
VAF-G1/4-IH-100	110	6	103	G1/4"-F	41.0	20	-	22	9.5	
VAF-G3/8-IH-100	110	6	103	G3/8"-F	36.0	15	-	22	9.5	
VAF-M10x1.5-EH-100	110	4	103	M10x1.5-M	36.0	12	-	22	9.5	
VAF-M14x1.5-EH-100	110	6	103	M14x1.5-M	36.0	12	-	22	9.5	
VAF-RA-100	110	6	103	-	35.5	-	32	-	9.5	