



### 技術資料 Technical data

#### ● 介紹及應用 Introduction and application

搬運表面平滑且敏感的工件  
(如表面帶有圖層或油漆)，  
防止工件損壞或表面留下痕跡  
用於生產、加工和輸送環節，  
例如在玻璃和光伏工業與真空吸盤配套使用


Handle workpieces with smooth and sensitive surfaces  
(such as coating or paint on the surface) to prevent  
The workpiece is damaged or marks are left on the surface  
Used in production, processing and transportation,  
for example in the glass and photovoltaic industries  
Use with vacuum suction cup

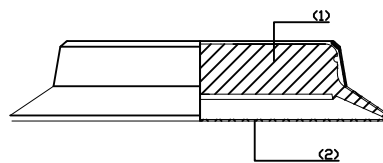
#### ● 結構 Structure

真空吸盤罩MU採用優質無紡布，  
耐撕裂和抗化學腐蝕性極強無摩擦，  
能夠柔和地搬運敏感工件  
真空吸盤罩帶有橡皮筋，  
易於在真空吸盤上固定或移除  
直徑120~280mm,尺寸吻合相應  
直徑範圍的真空吸盤

The vacuum suction cup cover MU is made of high-quality  
non-woven fabric, which is extremely resistant to  
tearing and chemical corrosion  
No friction, can gently handle sensitive workpieces  
Vacuum suction cup cover with rubber band, easy to fix or  
remove on vacuum suction cup  
Vacuum suction cups with a diameter of 120 to 280mm  
and dimensions corresponding to the corresponding diameter range

#### ● 訂購代號 How to code

VCU	-	30																												
產品代號 Product code		吸盤尺寸 Suction cup size																												
		<table border="1"> <tr><td>30</td><td>30mm</td><td>160</td><td>160mm</td></tr> <tr><td>40</td><td>40mm</td><td>210</td><td>210mm</td></tr> <tr><td>50</td><td>50mm</td><td>230</td><td>230mm</td></tr> <tr><td>70</td><td>70mm</td><td>280</td><td>280mm</td></tr> <tr><td>80</td><td>80mm</td><td>300</td><td>300mm</td></tr> <tr><td>100</td><td>100mm</td><td>360</td><td>360mm</td></tr> <tr><td>120</td><td>120mm</td><td></td><td></td></tr> </table>	30	30mm	160	160mm	40	40mm	210	210mm	50	50mm	230	230mm	70	70mm	280	280mm	80	80mm	300	300mm	100	100mm	360	360mm	120	120mm		
30	30mm	160	160mm																											
40	40mm	210	210mm																											
50	50mm	230	230mm																											
70	70mm	280	280mm																											
80	80mm	300	300mm																											
100	100mm	360	360mm																											
120	120mm																													



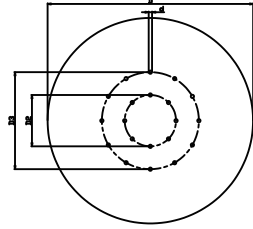
#### ● 標準尺寸資料 Standard size data

VCU-30
VCU-40
VCU-50
VCU-70
VCU-80
VCU-100
VCU-120
VCU-160
VCU-210
VCU-230
VCU-280
VCU-300
VCU-360

## 外觀尺寸圖 Dimensions

VCU

VCU



型號 Model	自重 Self weight [g]	夾持範圍 Holding range
VCU 30	0.9	27-35mm
VCU 40	1.2	35-45mm
VCU 50	1.3	45-60mm
VCU 70	1.7	65-80mm
VCU 80	2.0	80-100mm
VCU 100	2.0	100-115mm
VCU 120	2.0	115-130mm
VCU 160	4.0	150-180mm
VCU 210	4.0	210-220mm
VCU 230	5.0	230-250mm
VCU 280	9.0	270-300mm
VCU 300	17.0	300-330mm
VCU 360	23.0	360-400mm

型號 Model	尺寸 Size [mm]			
	d	D	D2	D3
VCU 30	3	30	-	-
VCU 40	3	40	-	-
VCU 50	5	50	30	-
VCU 70	5	70	30	-
VCU 80	5	80	30	-
VCU 100	6	100	50	-
VCU 120	6	120	50	-
VCU 160	6	160	50	-
VCU 210	6	210	50	-
VCU 230	6	230	50	-
VCU 280	6	280	50	-
VCU 300	6	300	90	170
VCU 360	6	360	90	170