

技術資料 Technical data

● 介紹及應用 Introduction and application

圓形扁平吸盤適用於紙箱搬運及包裝機械
適用於從頂面或側面搬運紙箱及硬紙質包裝
(碼垛、拆垛)
吸盤堅固耐磨，密封性能卓越，適用於高負荷場合


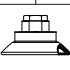

Round flat suction cup is suitable for carton handling and packaging machinery
Suitable for carrying cartons and cardboard packaging from the top or side (Palletizing, depalletizing)
The suction cup is strong and wear-resistant, with excellent sealing performance, suitable for high load

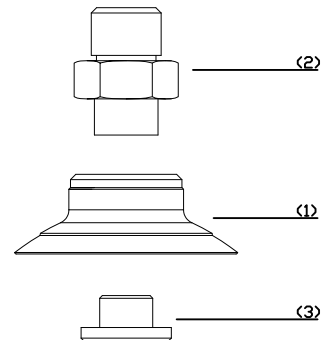
● 結構 Structure

圓形扁平真空吸盤密封唇柔韌、靈活，吸盤表面有加強結構
高耐磨材質TPE-70
嵌入式過濾網可作為預過濾組件(過濾精度250µm)
所有外螺紋接頭均配有O型圈

The sealing lips of the round flat vacuum suction cup are flexible and flexible, and the surface of the suction cup has a reinforced structure
High wear-resistant material TPE-70
The embedded filter can be used as a pre-filtering component (filtering accuracy 250µm)
All male connectors are equipped with O-rings

● 訂購代號 How to code

VFM	-	G 1/4	-	EH	-	20	-	TPE-70
產品代號 Product code		連接牙口 Connect the mouth		螺紋總類 Type of thread		吸盤尺寸 Suction cup size		材 質 Material
		G1/8 一分 G 1/4 兩分		 內螺紋 IH  外螺紋 EH		20 20mm 30 30mm 40 40mm 50 50mm		TPE-70



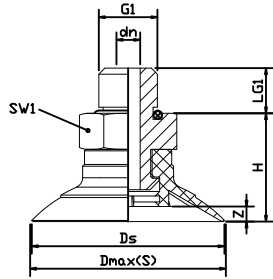
● 標準尺寸資料 Standard size data

VFM-G1/8-EH-20(TPE-70)
VFM-G1/8-IH-20(TPE-70)
VFM-G1/8-EH-30(TPE-70)
VFM-G1/8-IH-30(TPE-70)
VFM-G1/4-EH-40(TPE-70)
VFM-G1/4-IH-40(TPE-70)
VFM-G1/4-EH-50(TPE-70)
VFM-G1/4-IH-50(TPE-70)

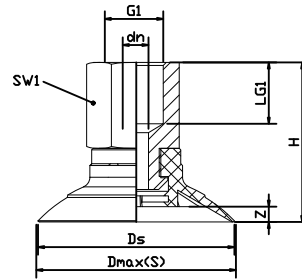
外觀尺寸圖 Dimensions

VFM

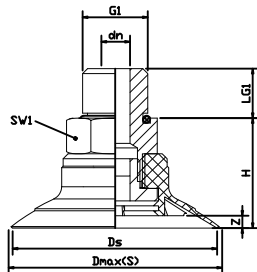
VFM 20...30 EH



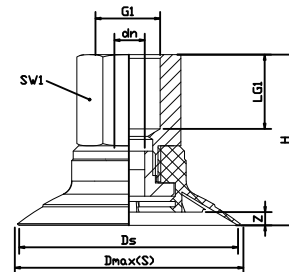
VFM 20...30 IH



VFM 40...50 EH

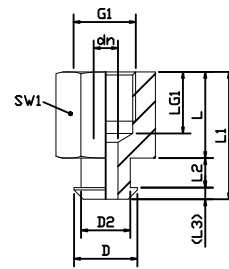
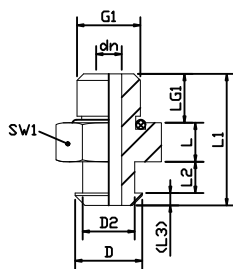


VFM 40...50 IH



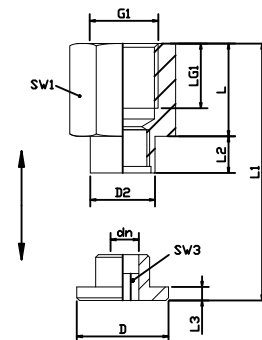
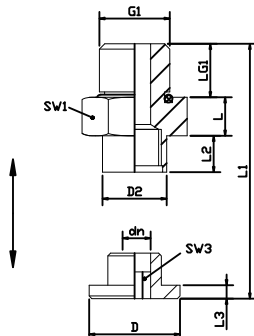
連接部件SC 040 G1/8-M,適用於VFM 20...30
Connecting part SC 040 G1 / 8-M for VFM 20 ... 30

連接部件SC 040 G1/8-F,適用於VFM 20...30
Connecting part SC 040 G1 / 8-F for VFM 20 ... 30



連接部件SC 050 G1/4-M,適用於VFM 40...50
Connecting part SC 050 G1 / 4-M for VFM 40 ... 50

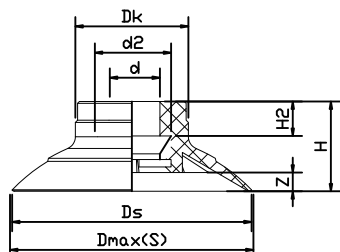
連接部件SC 050 G1/4-F,適用於VFM 40...50
Connecting part SC 050 G1 / 4-F for VFM 40 ... 50



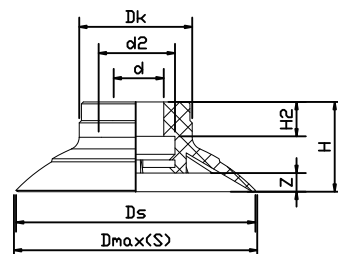
外觀尺寸圖 Dimensions

VFM

VFM 20...30 EH



VFM 40...50 EH



型號 Model	吸力 Suction [N]	拉脫力 Pull off force [N]	側向力 Lateral force [N]	內部體積 Internal volume [cm ³]	工件最小曲率半徑 Workpiece minimum radius of curvature [mm] (凸形)	推薦軟管直徑 Recommended hose diameter d[mm]	連接部件 Connecting parts SC...
VFM-20(TPE-70) SC040	16.0	19.2	10.5	1.0	25	4	040
VFM-30(TPE-70) SC040	29.5	35.3	22.5	2.3	45	6	040
VFM-40(TPE-70) SC050	49.5	62.5	25.0	5.1	75	6	050
VFM-50(TPE-70) SC050	74.2	87.4	44.0	7.9	100	6	050

型號 Model	尺寸 Size[mm]							
	dn	Ds	Dmax(S)	G1	H	LG1	SW1	Z(行程)
VFM-G1/8-EH-20(TPE-65)	4.1	21.4	23.3	G1/8-M	17	7.5	14	2
VFM-G1/8-IH-20(TPE-65)	4.1	21.4	23.3	G1/8-F	25	8	14	2
VFM-G1/8-EH-30(TPE-65)	4.1	31.4	33.6	G1/8-M	18	7.5	14	2.5
VFM-G1/8-IH-30(TPE-65)	4.1	31.4	33.6	G1/8-F	26	8	14	2.5
VFM-G1/4-EH-40(TPE-65)	6.1	41.4	43.7	G1/4-M	22	10	17	2.5
VFM-G1/4-IH-40(TPE-65)	6.1	41.4	43.7	G1/4-F	32	12	17	2.5
VFM-G1/4-EH-50(TPE-65)	6.1	51.4	53.9	G1/4-M	23	10	17	3.5
VFM-G1/4-IH-50(TPE-65)	6.1	51.4	53.9	G1/4-F	33	12	17	3.5

型號 Model	尺寸 Size[mm]											
	D	D2	dn	G1	L	L1	L2	L3	LG1	SW1	SW2	
G1/8-EH-SC040	10.3	8	4	G1/8"-M	6.0	25.2	4.8	1.9	7.5	14	4	
G1/8-IH-SC040	10.3	8	4	G1/8"-F	14.0	20.7	4.8	1.9	8.0	14	4	
G1/4-EH-SC050	17.0	12	6	G1/4"-M	7.2	26.5	6.8	2.5	10.0	17	6	
G1/4-IH-SC050	17.0	12	6	G1/4"-F	17.2	26.5	6.8	2.5	12.0	17	6	

型號 Model	尺寸 Size[mm]							
	d	d1	Dk	Ds	Dmax(S)	H	H2	Z(行程)
VFM-20(TPE-65) SC040	7.5	10.5	15.1	21.4	23.3	11	4.6	2
VFM-30(TPE-65) SC040	7.5	10.5	15.1	31.4	33.6	12	4.6	2.5
VFM-40(TPE-65) SC050	11	17.5	21.6	41.4	43.7	15	7	2.5
VFM-50(TPE-65) SC050	11	17.5	21.6	51.4	53.9	16	7	3.5