

技術資料 Technical data

● 介紹及應用 Introduction and application

搬運易碎易損型工件，如電子元件，注塑件等
 搬運表面極不平整的工件，如紙盒、管材等，
 最佳貼合凹凸表面
 直徑52mm及以上的吸盤內部帶有支撐結構，
 可防止工件被吸入
 特殊褶皺設計，適用於循環週期短の場合
 Handling fragile and fragile workpieces, such as electronic components, injection molded parts, etc.
 Handling workpieces with extremely uneven surfaces, such as cartons, pipes, etc. Best fit on uneven surface
 Suction cups with a diameter of 52mm and above have a support structure inside, Prevents workpieces from being sucked in
 Special fold design, suitable for occasions with short cycle

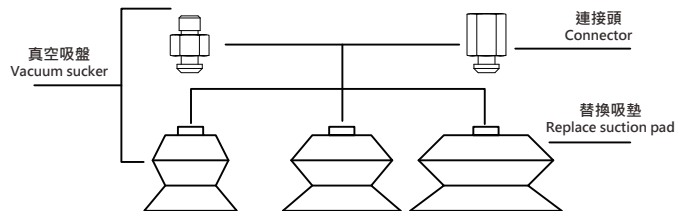
● 結構 Structure

堅固耐磨的2.5折波紋吸盤 VFU為單密封唇，
 由2.5折吸盤墊VFU-2.5和連接頭組成
 所有吸盤的接頭均為直插式接頭
 直徑52mm及以上的吸盤，底部帶有支撐結構
 Rugged 2.5-fold corrugated suction cup VFU is a single sealing lip, which is composed of a 2.5-fold suction cup pad VFU-2.5 and connector
 All suction cup fittings are push-in fittings
 52mm and above suction cups with support structure at the bottom

● 訂購代號 How to code

VFU2.5	G 1/8	EH	5	NBR
產品代號 Product code	連接牙口 Connect the mouth	螺紋總類 Type of thread	吸盤尺寸 Suction cup size	材質 Material
	M5 G 1/8 一分 G 1/4 兩分	 內螺紋 IH 外螺紋 EH	5 5mm 7 7mm 9 9mm 12 12mm 14 14mm 18 18mm 20 20mm 25 25mm 32 32mm 42 42mm 52 52mm 62 62mm 88 88mm	NBR SI NM無痕

在同一系列的接頭組合中，替換吸墊和接頭可以根據要求組合
 In the same series of connector combinations, replacement suction pads and connectors can be combined as required



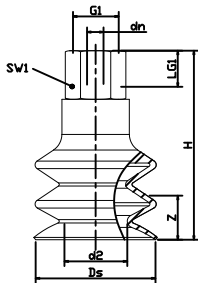
● 標準尺寸資料 Standard size data

VFU-2.5-M5-EH-5(NBR)	VFU-2.5-G1/8-EH-18(NBR)	VFU-2.5-G1/4-EH-62(NBR)	VFU-2.5-M5-EH-12(SI)	VFU-2.5-G1/4-IH-32(SI)	VFU-2.5-M5-EH-7(NM無痕)	VFU-2.5-G1/8-EH-20(NM無痕)
VFU-2.5-M5-IH-5(NBR)	VFU-2.5-G1/8-IH-18(NBR)	VFU-2.5-G1/4-IH-62(NBR)	VFU-2.5-G1/8-EH-14(SI)	VFU-2.5-G1/4-EH-42(SI)	VFU-2.5-G1/8-EH-9(NM無痕)	VFU-2.5-G1/8-IH-20(NM無痕)
VFU-2.5-G1/8-EH-7(NBR)	VFU-2.5-M5-EH-18(NBR)	VFU-2.5-G1/4-EH-88(NBR)	VFU-2.5-G1/8-IH-14(SI)	VFU-2.5-G1/4-IH-42(SI)	VFU-2.5-G1/8-IH-9(NM無痕)	VFU-2.5-M5-EH-20(NM無痕)
VFU-2.5-G1/8-IH-7(NBR)	VFU-2.5-G1/8-EH-20(NBR)	VFU-2.5-G1/4-IH-88(NBR)	VFU-2.5-M5-EH-14(SI)	VFU-2.5-G1/4-EH-52(SI)	VFU-2.5-M5-EH-9(NM無痕)	VFU-2.5-G1/8-EH-25(NM無痕)
VFU-2.5-M5-EH-7(NBR)	VFU-2.5-G1/8-IH-20(NBR)	VFU-2.5-M5-EH-5(SI)	VFU-2.5-G1/8-EH-18(SI)	VFU-2.5-G1/4-IH-52(SI)	VFU-2.5-G1/8-EH-12(NM無痕)	VFU-2.5-G1/8-IH-25(NM無痕)
VFU-2.5-G1/8-EH-9(NBR)	VFU-2.5-G1/8-IH-20(NBR)	VFU-2.5-M5-IH-5(SI)	VFU-2.5-G1/8-IH-18(SI)	VFU-2.5-G1/4-IH-52(SI)	VFU-2.5-G1/8-IH-12(NM無痕)	VFU-2.5-G1/4-EH-32(NM無痕)
VFU-2.5-G1/8-IH-9(NBR)	VFU-2.5-G1/8-EH-25(NBR)	VFU-2.5-G1/8-EH-7(SI)	VFU-2.5-M5-EH-18(SI)	VFU-2.5-G1/4-IH-62(SI)	VFU-2.5-M5-EH-12(NM無痕)	VFU-2.5-G1/4-IH-32(NM無痕)
VFU-2.5-M5-EH-9(NBR)	VFU-2.5-G1/8-IH-25(NBR)	VFU-2.5-G1/8-IH-7(SI)	VFU-2.5-G1/8-EH-20(SI)	VFU-2.5-G1/4-EH-62(SI)	VFU-2.5-G1/8-EH-14(NM無痕)	VFU-2.5-G1/4-EH-42(NM無痕)
VFU-2.5-G1/8-EH-12(NBR)	VFU-2.5-G1/4-EH-32(NBR)	VFU-2.5-M5-EH-7(SI)	VFU-2.5-G1/8-IH-20(SI)	VFU-2.5-G1/4-EH-88(SI)	VFU-2.5-G1/8-IH-14(NM無痕)	VFU-2.5-G1/4-IH-42(NM無痕)
VFU-2.5-G1/8-IH-12(NBR)	VFU-2.5-M5-EH-20(NBR)	VFU-2.5-M5-EH-9(SI)	VFU-2.5-G1/8-IH-20(SI)	VFU-2.5-G1/4-IH-88(SI)	VFU-2.5-M5-EH-5(NM無痕)	VFU-2.5-G1/4-EH-32(NM無痕)
VFU-2.5-M5-EH-12(NBR)	VFU-2.5-G1/4-EH-42(NBR)	VFU-2.5-G1/8-IH-9(SI)	VFU-2.5-G1/8-EH-25(SI)	VFU-2.5-M5-IH-5(NM無痕)	VFU-2.5-G1/8-EH-18(NM無痕)	VFU-2.5-G1/4-IH-52(NM無痕)
VFU-2.5-G1/8-EH-14(NBR)	VFU-2.5-G1/4-IH-42(NBR)	VFU-2.5-M5-EH-9(SI)	VFU-2.5-G1/8-IH-25(SI)	VFU-2.5-G1/8-EH-7(NM無痕)	VFU-2.5-G1/8-IH-18(NM無痕)	VFU-2.5-G1/4-EH-62(NM無痕)
VFU-2.5-G1/8-IH-14(NBR)	VFU-2.5-G1/4-EH-52(NBR)	VFU-2.5-G1/8-EH-12(SI)	VFU-2.5-G1/4-EH-32(SI)	VFU-2.5-G1/8-IH-7(NM無痕)	VFU-2.5-M5-EH-18(NM無痕)	VFU-2.5-G1/4-IH-62(NM無痕)
VFU-2.5-M5-EH-14(NBR)	VFU-2.5-G1/4-IH-52(NBR)	VFU-2.5-G1/8-IH-12(SI)				

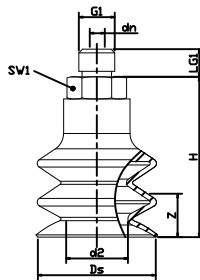
外觀尺寸圖 Dimensions

VFU-2.5

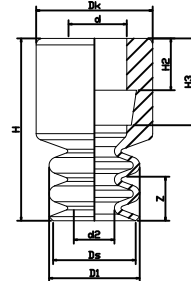
VFU-2.5 5 至 88 IH



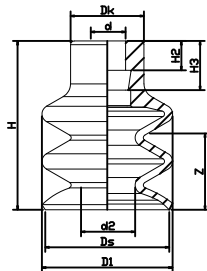
VFU-2.5 5 至 88 EH



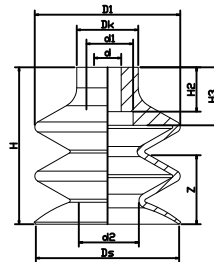
VFU-2.5 5 至 9



VFU-2.5 12 至 25



VFU-2.5 32 至 88



型號 Model	吸力 Suction [N]	拉脫力 Pull off force [N]	內部體積 Internal volume [cm ³]	工件最小曲率半徑 Workpiece minimum radius of curvature [mm] (凸形)	推薦軟管直徑 Recommended hose diameter d[mm]	接頭系列 Connector Series
VFU-2.5 5	0.1	0.8	0.033	8	2	S017
VFU-2.5 7	0.1	0.9	0.043	8	4	S016
VFU-2.5 9	0.7	2.3	0.150	10	4	S016
VFU-2.5 12	0.9	3.5	0.600	13	4	S016
VFU-2.5 14	1.2	5.7	0.975	15	4	S016
VFU-2.5 18	2.3	8.5	1.350	20	4	S016
VFU-2.5 20	3.8	12.1	2.000	30	4	S016
VFU-2.5 25	4.5	19.0	5.400	30	4	S016
VFU-2.5 32	12.0	36.9	10.000	35	6	S018
VFU-2.5 42	13.6	44.0	19.500	75	6	S018
VFU-2.5 52	27.0	96.0	62.000	75	6	S018
VFU-2.5 62	39.6	137.0	72.500	75	6	S018
VFU-2.5 88	45.2	286.0	165.000	100	9	S019

外觀尺寸圖 Dimensions

VFU-2.5

型號 Model	尺寸Size [mm]							
	d2	dn	Ds	G1	H	LG1	SWL	Z(行程)
VFU-2.5-M5-EH-5	2.6	2.0	5.0	M5-M	19.0	5.0	8	3
VFU-2.5-M5-IH-5	2.6	2.0	5.0	M5-F	24.0	5.5	8	3
VFU-2.5-G1/8-EH-7	1.8	3.5	5.9	G1/8"-M	20.0	7.5	14	3
VFU-2.5-G1/8-IH-7	1.8	3.5	5.9	G1/8"-F	26.0	8.5	14	3
VFU-2.5-M5-EH-7	1.8	2.5	5.9	M5-M	19.0	5.0	7	3
VFU-2.5-G1/8-EH-9	4.1	3.5	9.0	G1/8"-M	21.0	7.5	14	3
VFU-2.5-G1/8-IH-9	4.1	3.5	9.0	G1/8"-F	27.0	8.5	14	3
VFU-2.5-M5-EH-9	4.1	2.5	9.0	M5-M	20.0	5.0	7	3
VFU-2.5-G1/8-EH-12	5.0	3.5	12.0	G1/8"-M	27.0	7.5	14	7
VFU-2.5-G1/8-IH-12	5.0	3.5	12.0	G1/8"-F	33.0	8.5	14	7
VFU-2.5-M5-EH-12	5.0	2.5	12.0	M5-M	26.0	5.0	7	7
VFU-2.5-G1/8-EH-14	5.4	3.5	14.5	G1/8"-M	28.0	7.5	14	9
VFU-2.5-G1/8-IH-14	5.4	3.5	14.5	G1/8"-F	34.0	8.5	14	9
VFU-2.5-M5-EH-14	5.4	2.5	14.5	M5-M	27.0	5.0	7	9
VFU-2.5-G1/8-EH-18	8.0	3.5	17.2	G1/8"-M	28.0	7.5	14	9
VFU-2.5-G1/8-IH-18	8.0	3.5	17.2	G1/8"-F	34.0	8.5	14	9
VFU-2.5-M5-EH-18	8.0	2.5	17.2	M5-M	27.0	5.0	7	9
VFU-2.5-G1/8-EH-20	10.5	3.5	20.0	G1/8"-M	28.0	7.5	14	9
VFU-2.5-G1/8-IH-20	10.5	3.5	20.0	G1/8"-F	34.0	8.5	14	9
VFU-2.5-M5-EH-20	10.5	2.5	20.0	M5-M	27.0	5.0	7	9
VFU-2.5-G1/8-EH-25	10.0	3.5	23.0	G1/8"-M	40.0	7.5	14	18
VFU-2.5-G1/8-IH-25	10.0	3.5	23.0	G1/8"-F	46.0	8.5	14	18
VFU-2.5-G1/4-EH-32	16.0	4.4	32.0	G1/4"-M	41.5	11.0	17	15
VFU-2.5-G1/4-IH-32	16.0	4.4	32.0	G1/4"-F	52.5	12.0	17	15
VFU-2.5-G1/4-EH-42	17.8	4.4	42.6	G1/4"-M	50.0	11.0	17	20
VFU-2.5-G1/4-IH-42	17.8	4.4	42.6	G1/4"-F	61.0	12.0	17	20
VFU-2.5-G1/4-EH-52	24.6	4.4	52.5	G1/4"-M	53.0	11.0	17	25
VFU-2.5-G1/4-IH-52	24.6	4.4	52.5	G1/4"-F	64.0	12.0	17	25
VFU-2.5-G1/4-EH-62	29.5	4.4	62.2	G1/4"-M	59.0	11.0	17	29
VFU-2.5-G1/4-IH-62	29.5	4.4	62.2	G1/4"-F	70.0	12.0	17	29
VFU-2.5-G1/4-EH-88	33.0	8.0	89.0	G1/4"-M	92.0	11.0	21	34
VFU-2.5-G1/4-IH-88	33.0	8.0	89.0	G1/4"-F	103.0	12.0	21	34

型號 Model	尺寸Size [mm]									
VFU-2.5 5	3.5	-	2.6	6.0	7	5.0	14.0	8.0	-	2
VFU-2.5 7	4.5	-	1.8	6.5	9	5.9	14.0	6.5	-	3
VFU-2.5 9	4.5	-	4.1	8.9	9	9.0	15.0	8.2	-	3
VFU-2.5 12	4.5	-	5.0	12.0	10	12.0	21.0	6.9	9.0	6
VFU-2.5 14	4.5	-	5.4	13.9	10	14.5	22.8	6.9	9.0	9
VFU-2.5 18	4.5	-	8.0	17.8	10	17.2	22.6	6.9	9.0	9
VFU-2.5 20	4.5	-	10.5	20.0	10	20.0	22.1	6.9	9.0	9
VFU-2.5 25	4.5	-	10.0	25.0	10	23.0	34.0	6.9	9.0	18
VFU-2.5 32	8.0	15	16.0	32.6	18	32.0	37.5	13.0	17.0	15
VFU-2.5 42	8.0	15	17.8	43.5	18	42.6	46.0	13.0	17.0	20
VFU-2.5 52	8.0	-	24.6	52.0	18	52.5	48.7	13.0	-	25
VFU-2.5 62	8.0	-	29.5	62.0	18	62.2	54.0	13.0	-	29
VFU-2.5 88	11.7	25	33.0	88.2	25	89.0	86.5	19.7	26.0	34