

VHL-1.5

長條型高溫真空吸盤
(1.5層-耐溫度:170~250度)

Long type high temperature vacuum suction cup
(1.5 layers-temperature resistance: 170 ~ 250 degrees)

 VHL-1.5



技術資料 Technical data

● 介紹及應用 Introduction and application

1.5層橢圓形扁平吸盤，用於搬運熱成型板材，耐高溫至250°C
適用於鋼板熱成型後搬運平面及曲面工件或熱成型板材，工件無變形，無表面損傷適




1.5-layer oval flat suction cup, used for handling thermoformed sheet, High temperature resistance to 250 °C
Suitable for handling flat and curved workpieces after hot forming of steel plates or Thermoformed sheet, without deformation of workpiece, suitable for surface damage

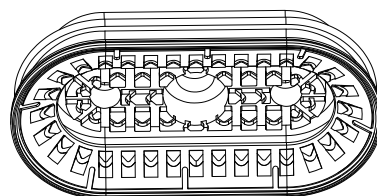
● 結構 Structure

堅固、耐磨型高溫材質橢圓扁平吸盤，單唇邊，特殊花紋設計及內部支撐結構，在有粉塵及潮濕環境下提供極高的橫向力抓取力結構

Sturdy, wear-resistant high temperature material oval flat suction cup, single lip, Special pattern design and internal support structure, when there is dust and Structure providing extremely high lateral force grasping force in wet environment

● 訂購代號 How to code

VHL-1.5	G 1/4	EH	60X30	NBR-250
產品代號 Product code	連接牙口 Connect the mouth	螺紋總類 Type of thread	吸盤尺寸 Suction cup size	材 質 Material
	G 1/4 兩分 G 3/8 三分	 內螺紋 IH  外螺紋 EH	60X30 mm 80X40 mm 110X55 mm	NBR-170 NBR-250



● 標準尺寸資料 Standard size data

VHL-1.5-G1/4-EH-60X30(170°C)	VHL-1.5-G1/4-IH-110X55(170°C)
VHL-1.5-G1/4-IH-60X30(170°C)	VHL-1.5-G3/8-EH-110X55(170°C)
VHL-1.5-G3/8-EH-60X30(170°C)	VHL-1.5-G3/8-IH-110X55(170°C)
VHL-1.5-G3/8-IH-60X30(170°C)	VHL-1.5-G1/4-EH-60X30-2(250°C)
VHL-1.5-G1/4-EH-80X40(170°C)	VHL-1.5-G1/4-IH-60X30-2(250°C)
VHL-1.5-G1/4-IH-80X40(170°C)	VHL-1.5-G3/8-IH-60X30-2(250°C)
VHL-1.5-G3/8-EH-80X40(170°C)	VHL-1.5-G1/4-EH-80X40-2(250°C)
VHL-1.5-G3/8-IH-80X40(170°C)	VHL-1.5-G1/4-IH-80X40-2(250°C)
VHL-1.5-G1/4-EH-110X55(170°C)	VHL-1.5-G3/8-IH-80X40-2(250°C)

VHL-1.5

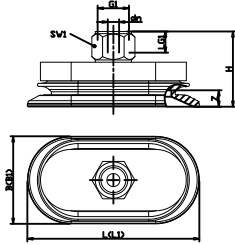
長條型高溫真空吸盤
(1.5層-耐溫度:170~250度)

Long type high temperature vacuum suction cup
(1.5 layers-temperature resistance: 170 ~ 250 degrees)

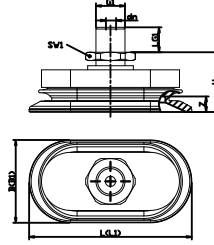
外觀尺寸圖 Dimensions

VHL-1.5

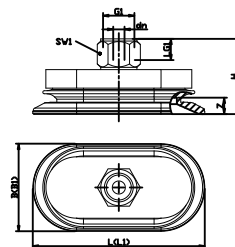
VHL-1.5(170°C) 60x30 至 110x55 IH



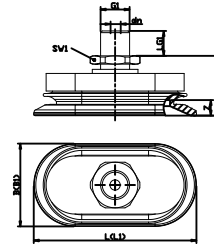
VHL-1.5(170°C) 60x30 至 110x55 EH



VHL-1.5 2(250°C) 60x30 至 80x40 IH



VHL-1.5 2(250°C) 60x30 至 80x40 EH



型號 Model	吸力 Suction [N]	拉脫力 Pull off force [N]	橫向力 Lateral force [N]	內部體積 Internal volume [cm ³]	工件最小曲率半徑 Workpiece minimum radius of curvature [mm] (凸形)	推薦軟管直徑 Recommended hose diameter d[mm]
VHL-1.5-60X30(170°C)	38	70	80	10.5	18	4
VHL-1.5-80X40(170°C)	65	132	153	21.8	25	6
VHL-1.5-110X50(170°C)	110	234	299	53.1	50	6

型號 Model	吸力 Suction [N]	拉脫力 Pull off force [N]	橫向力 Lateral force [N]	內部體積 Internal volume [cm ³]	工件最小曲率半徑 Workpiece minimum radius of curvature [mm] (凸形)	推薦軟管直徑 Recommended hose diameter d[mm]
VHL-1.5-60X30-2(250°C)	38	55	56	9.6	30	4
VHL-1.5-80X40-2(250°C)	65	100	98	20.6	40	6

型號 Model	尺寸 Size [mm]												
	B1	Bmax(s)	Bs	dn	G1	H	L1	LG1	Lmax(s)	Ls	SW1	Z(行程)	
VHL-1.5-G1/4-EH-60X30(170°C)	31	33	30.6	5.0	G1/4"-M	27.0	55.7	8.0	63.0	60.6	17	7.0	
VHL-1.5-G1/4-IH-60X30(170°C)	31	33	30.6	5.5	G1/4"-F	34.4	55.7	8.0	63.0	60.6	17	7.0	
VHL-1.5-G3/8-EH-60X30(170°C)	31	33	30.6	5.2	G3/8"-M	27.5	55.7	7.4	63.0	60.6	22	7.0	
VHL-1.5-G3/8-IH-60X30(170°C)	31	33	30.6	6.0	G3/8"-F	35.0	55.7	9.0	63.0	60.6	22	7.0	
VHL-1.5-G1/4-EH-80X40(170°C)	40	43	40.6	5.0	G1/4"-M	29.7	73.3	8.0	83.0	80.6	17	9.0	
VHL-1.5-G1/4-IH-80X40(170°C)	40	43	40.6	6.0	G1/4"-F	37.2	73.3	8.0	83.0	80.6	17	9.0	
VHL-1.5-G3/8-EH-80X40(170°C)	40	43	40.6	5.2	G3/8"-M	27.7	73.3	8.0	83.0	80.6	22	9.0	
VHL-1.5-G3/8-IH-80X40(170°C)	40	43	40.6	6.0	G3/8"-F	37.7	73.3	9.0	83.0	80.6	22	9.0	
VHL-1.5-G1/4-EH-110X55(170°C)	53	59	55.1	6.0	G1/4"-M	35.5	98.8	8.0	114.0	110.1	17	12.0	
VHL-1.5-G1/4-IH-110X55(170°C)	53	59	55.1	8.0	G1/4"-F	43.0	98.8	8.0	114.0	110.1	17	12.0	
VHL-1.5-G3/8-EH-110X55(170°C)	53	59	55.1	6.1	G3/8"-M	33.5	98.8	8.0	114.0	110.1	22	12.0	
VHL-1.5-G3/8-IH-110X55(170°C)	53	59	55.1	8.0	G3/8"-F	43.5	98.8	9.0	114.0	110.1	22	12.0	

型號 Model	尺寸 Size [mm]												
	B1	Bmax(s)	Bs	dn	G1	H	L1	LG1	Lmax(s)	Ls	SW1	Z(行程)	
VHL-1.5-G1/4-EH-60X30-2(250°C)	31	33	30.6	5	G1/4"-M	27.0	56	8	63	60.6	17	7	
VHL-1.5-G1/4-IH-60X30-2(250°C)	31	33	30.6	6	G1/4"-F	34.4	56	8	63	60.6	17	7	
VHL-1.5-G3/8-IH-60X30-2(250°C)	31	33	30.6	6	G3/8"-F	35.0	56	9	63	60.6	22	7	
VHL-1.5-G1/4-EH-80X40-2(250°C)	40	43	40.6	5	G1/4"-M	29.7	73	8	83	80.6	17	9	
VHL-1.5-G1/4-IH-80X40-2(250°C)	40	43	40.6	6	G1/4"-F	37.2	73	8	83	80.6	17	9	
VHL-1.5-G3/8-IH-80X40-2(250°C)	40	43	40.6	6	G3/8"-F	37.7	73	9	83	80.6	22	9	