



## 技術資料 Technical data

### ● 介紹及應用 Introduction and application

橢圓形扁平吸盤，用於搬運熱成型板材，耐高溫至250°C  
適用於鋼板熱成型後搬運平面及曲面工件或熱成型板材，工件無變形，無表面損傷適


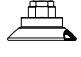
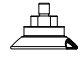
Oval flat suction cup for handling thermoformed plates, High temperature resistance to 250 °C  
Suitable for handling flat and curved workpieces after hot forming of steel plates or Thermoformed sheet, without deformation of workpiece, suitable for surface damage

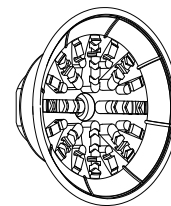
### ● 結構 Structure

堅固、耐磨型高溫材質橢圓扁平吸盤，單唇邊，特殊花紋設計及內部支撐結構，在有粉塵及潮濕環境下提供極高的橫向力抓取力結構

Sturdy, wear-resistant high-temperature material oval flat suction cup, single lip, special pattern design And internal support structure, providing extremely high lateral force grasping force structure in dusty and humid environment

## 訂購代號 How to code

VHL	-	G 1/4	-	EH	-	60X23	-	NBR-250
產品代號 Product code		連接牙口 Connect the mouth		螺紋總類 Type of thread		吸盤尺寸 Suction cup size		材 質 Material
		G 1/4 兩分 G3/8 三分		 內螺紋 IH  外螺紋 EH		60X23 mm 80X40 mm 90X30 mm 100X50 mm		NBR-250



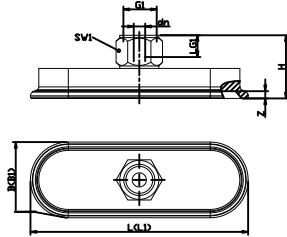
### ● 標準尺寸資料 Standard size data

VHL-G1/4-EH-60X23-2(250°C)
VHL-G1/4-IH-60X23-2(250°C)
VHL-G3/8-IH-60X23-2(250°C)
VHL-G1/4-EH-80X40-2(250°C)
VHL-G1/4-IH-80X40-2(250°C)
VHL-G3/8-IH-80X40-2(250°C)
VHL-G1/4-EH-90X30-2(250°C)
VHL-G1/4-IH-90X30-2(250°C)
VHL-G3/8-IH-90X30-2(250°C)
VHL-G1/4-EH-100X50-2(250°C)
VHL-G1/4-IH-100X50-2(250°C)
VHL-G3/8-IH-100X50-2(250°C)

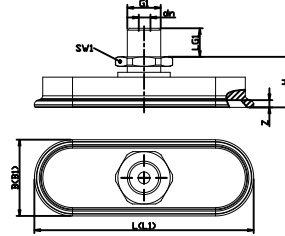
## 外觀尺寸圖 Dimensions

### VHL

VHL 30 至 80 IH



VHL 30 至 80 IH



型號 Model	吸力 Suction [N]	橫向力 Lateral force [N]	內部體積 Internal volume [cm <sup>3</sup> ]	工件最小曲率半徑 Workpiece minimum radius of curvature [mm] (凸形)	推薦軟管直徑 Recommended hose diameter d[mm]
VHL-60X23-2(250°C)	57	36	3.0	20	4
VHL-80X40-2(250°C)	140	108	10.7	50	4
VHL-90X30-2(250°C)	122	94	7.0	40	4
VHL-100X50-2(250°C)	217	177	20.0	75	6

型號 Model	尺寸 Size [mm]									
	Bmax(s)	Bs	dn	G1	H	LG1	Lmax(s)	Ls	SW1	Z(行程)
VHL-G1/4-EH-60X23-2(250°C)	25	21.6	5	G1/4"-M	18	8	64	60.6	17	3
VHL-G1/4-IH-60X23-2(250°C)	25	21.6	6	G1/4"-F	26	8	64	60.6	17	3
VHL-G1/4-IH-60X23-2(250°C)	25	21.6	6	G3/8"-F	26	8	64	60.6	22	3
VHL-G1/4-EH-80X40-2(250°C)	43	38.6	5	G1/4"-M	20	8	85	80.6	17	4
VHL-G1/4-IH-80X40-2(250°C)	43	38.6	6	G1/4"-F	28	8	85	80.6	17	4
VHL-G3/8-IH-80X40-2(250°C)	43	38.6	6	G3/8"-F	28	9	85	80.6	22	4
VHL-G1/4-EH-90X30-2(250°C)	34	30.6	5	G1/4"-M	19	8	94	90.6	17	3
VHL-G1/4-IH-90X30-2(250°C)	34	30.6	6	G1/4"-F	26	8	94	90.6	17	3
VHL-G3/8-IH-90X30-2(250°C)	34	30.6	6	G3/8"-F	27	9	94	90.6	22	3
VHL-G1/4-EH-100X50-2(250°C)	54	48.1	6	G1/4"-M	22	8	106	101.1	17	5
VHL-G1/4-IH-100X50-2(250°C)	54	48.1	8	G1/4"-F	30	8	106	101.1	17	5
VHL-G3/8-IH-100X50-2(250°C)	54	48.1	8	G3/8"-F	31	9	106	101.1	22	5