



### 技術資料 Technical data

#### ● 介紹及應用 Introduction and application

搬運熱成型金屬板，耐高溫至250°C (快節拍使用)  
 熱成型後，工件下料使用  
 搬運金屬薄板，工件不會變形；熱成型後，  
 工件下料使用  
 在高熱成型沖壓線專用真空吸盤

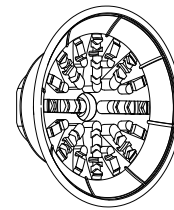
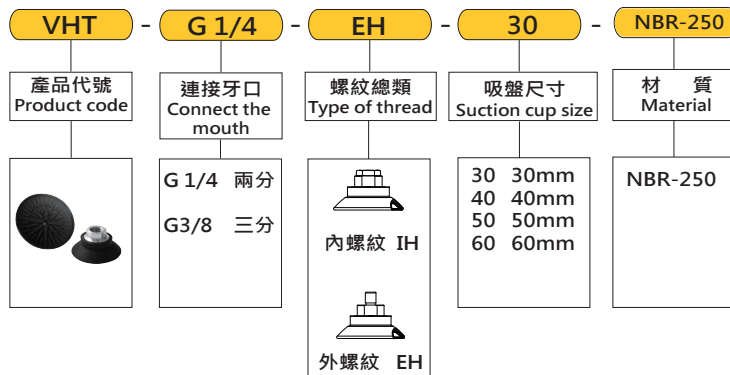
Handling thermoformed metal sheet, high temperature resistance to 250 °C (use in fast cycle time)  
 After thermoforming, the workpiece is cut and used  
 When the metal sheet is moved, the workpiece will not be deformed; after thermoforming, Workpiece blanking use  
 Vacuum suction cup for high-temperature forming stamping line

#### ● 結構 Structure

採用NBR材質，單密封唇，  
 有特殊的凹槽設計和內部支撐設計  
 真空吸盤和接頭為硫化固定 (高強度材質)  
 吸盤有多種連接形式可選  
 可供兩種材質硬度供選擇 (NBR-45 · NBR-60)

Adopt NBR material, single sealing lip,  
 With special groove design and internal support design  
 Vacuum suction cups and joints are vulcanized and fixed (high strength material),  
 The suction cup has a variety of connection options  
 Available in two materials for hardness (NBR-45, NBR-60)

#### ● 訂購代號 How to code



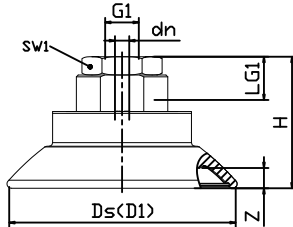
#### ● 標準尺寸資料 Standard size data

VHT-G1/4-EH-30(250°C)
VHT-G1/4-IH-30(250°C)
VHT-G3/8-IH-30(250°C)
VHT-G1/4-EH-40(250°C)
VHT-G1/4-IH-40(250°C)
VHT-G3/8-IH-40(250°C)
VHT-G1/4-EH-50(250°C)
VHT-G1/4-IH-50(250°C)
VHT-G3/8-IH-50(250°C)
VHT-G1/4-EH-60(250°C)
VHT-G1/4-IH-60(250°C)
VHT-G3/8-IH-60(250°C)

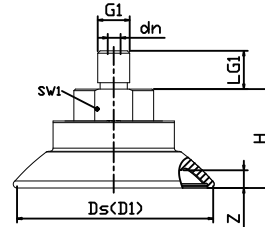
### 外觀尺寸圖 Dimensions

VHT

VHT 30 至 60 IH



VHT 30 至 60 EH



型號 Model	吸力 Suction [N]	橫向力 Lateral force [N]	內部體積 Internal volume [cm <sup>3</sup> ]	工件最小曲率半徑 Workpiece minimum radius of curvature [mm] (凸形)	推薦軟管直徑 Recommended hose diameter d[mm]
VHT-65 30	38	29	1.7	40	4
VHT-65 40	69	51	3.8	50	4
VHT-65 50	100	78	7.0	65	4
VHT-65 60	150	102	13.0	75	6

型號 Model	尺寸 Size [mm]								
	Dmax(s)	dn	Ds	G1	H	LG1	SW1	Z(行程)	
VHT-65-G1/4-EH-30	34	4	31	G1/4"-M	20	10	17	3	
VHT-65-G1/4-IH-30	34	4	31	G1/4"-F	20	12	17	3	
VHT-65-G3/8-IH-30	34	4	31	G3/8"-F	36	9	22	3	
VHT-65-G1/4-EH-40	46	4	41	G1/4"-M	22	10	17	4	
VHT-65-G1/4-IH-40	46	4	41	G1/4"-F	22	12	17	4	
VHT-65-G3/8-IH-40	46	4	41	G3/8"-F	38	9	22	4	
VHT-65-G1/4-EH-50	56	6	50	G1/4"-M	28	10	22	5	
VHT-65-G1/4-IH-50	56	6	50	G1/4"-F	33	15	22	5	
VHT-65-G3/8-IH-50	56	6	50	G3/8"-F	28	15	22	5	
VHT-65-G1/4-EH-60	67	6	61	G1/4"-M	31	10	22	6	
VHT-65-G1/4-IH-60	67	6	61	G1/4"-F	36	15	22	6	
VHT-65-G3/8-IH-60	67	6	61	G3/8"-F	31	15	22	6	