

▶ VOF-1.5



技術資料 Technical data

● 介紹及應用 Introduction and application

用於快速搬運金屬薄板(短循環週期適用)
搬運細長形金屬件，如內飾的金屬薄板和加強肋等
搬運表面有輕微曲率的金屬板材部件，
不會產生凹陷或變形

吸盤底部有特殊凹槽結構，可防止油性金屬板
在搬運過程中滑動，確保工件在壓機裡精確定位

Used to quickly move thin metal sheets (for short cycle periods)
Handling of elongated metal parts, such as metal sheets and stiffeners for interiors

Handle metal sheet parts with slight curvature on the surface,
Does not dent or deform

The bottom of the suction cup has a special groove structure to
prevent oily metal plates


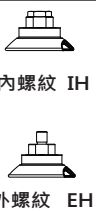
Sliding during handling to ensure precise positioning of
the workpiece in the press

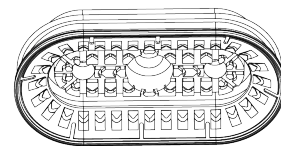
● 結構 Structure

堅固耐磨的1.5層真空吸盤，採用NBR材質，
單密封唇，有特殊的凹槽設計和內部支撐設計
真空吸盤和接頭為硫化固定（高強度材質），
吸盤有多種連接形式可選
可供兩種材質硬度供選擇（NBR-45，NBR-60）

Sturdy and wear-resistant 1.5-layer vacuum suction cup,
made of NBR material, single sealing lip, with
special groove design and internal support design
Vacuum suction cups and joints are vulcanized and fixed
(high-strength material), and suction cups are available in
various connection forms
Available in two materials for hardness (NBR-45, NBR-60)

● 訂購代號 How to code

VOF-1.5	-	G 1/4	-	EH	-	60X30	-	NBR-60
產品代號 Product code		連接牙口 Connect the mouth		螺紋總類 Type of thread		吸盤尺寸 Suction cup size		材質 Material
		G 1/4 兩分 G3/8 三分				60X30 mm 80X40 mm 110X55 mm		NBR-60



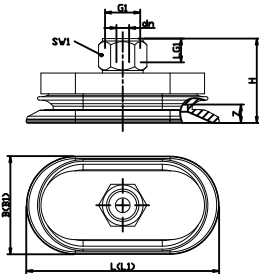
● 標準尺寸資料 Standard size data

VOF-1.5-G1/4-EH-60X30(NBR-60)
VOF-1.5-G1/4-EH-80X40(NBR-60)
VOF-1.5-G1/4-EH-110X55(NBR-60)
VOF-1.5-G1/4-IH-60X30(NBR-60)
VOF-1.5-G1/4-IH-80X40(NBR-60)
VOF-1.5-G1/4-IH-110X55(NBR-60)
VOF-1.5-G3/8-IH-60X30(NBR-60)
VOF-1.5-G3/8-IH-80X40(NBR-60)
VOF-1.5-G3/8-IH-110X55(NBR-60)

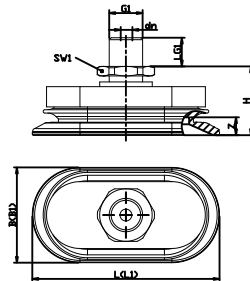
外觀尺寸圖 Dimensions

VOF-1.5

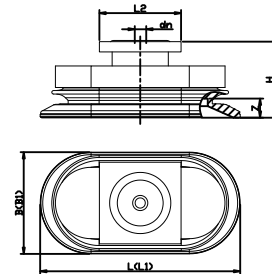
VOF1.5 60X30 至 110X55 IH



VOF1.5 60X30 至 110X55 EH



VOF1.5 60X30 至 110X55 RA (矩形適配器)



型號 Model	吸力 Suction [N]	拉脫力 Pull off force [N]	側向力 Lateral force [N]	油性表面側向力 Oily surface lateral force [N]	內部體積 Internal volume [cm ³]	工件最小曲率半徑 Workpiece minimum radius of curvature [mm] (凸形)	推薦軟管直徑 Recommended hose diameter d[mm]
VOF-1.5-60X30(NBR-60)	38	55	57	52	9.6	30	4
VOF-1.5-80X40(NBR-60)	65	100	100	95	20.6	40	6
VOF-1.5-110X55(NBR-60)	110	185	180	161	50.8	50	6

型號 Model	尺寸 Size[mm]										
	B	B1	dn	G1	H	L	L1	L2	LG1	SW1	Z(行程)
VOF-1.5-G1/4-EH-60X30(NBR-60)	32	33	5	G1/4"-M	27.0	62	63	-	8	17	7.0
VOF-1.5-G1/4-IH-60X30(NBR-60)	32	33	6	G1/4"-F	34.5	62	63	-	8	17	7.0
VOF-1.5-G3/8-IH-60X30(NBR-60)	32	33	6	G3/8"-F	35.0	62	63	-	9	22	7.0
VOF-1.5-M10X1.5-EH-60X30(NBR-60)	32	33	4	M10x1.5-M	27.0	62	63	-	10	17	7.0
VOF-1.5-M14X1.5-EH-60X30(NBR-60)	32	33	5	M14x1.5-M	29.0	62	63	-	10	22	7.0
VOF-1.5-RA-60X30(NBR-60)	32	33	4	-	30.0	62	63	32	-	-	7.0
VOF-1.5-G1/4-EH-80X40(NBR-60)	42	43	5	G1/4"-M	29.7	82	83	-	8	17	9.0
VOF-1.5-G1/4-IH-80X40(NBR-60)	42	43	6	G1/4"-F	37.2	82	83	-	8	17	9.0
VOF-1.5-G3/8-IH-80X40(NBR-60)	42	43	6	G3/8"-F	37.7	82	83	-	9	22	9.0
VOF-1.5-M10X1.5-EH-80X40(NBR-60)	42	43	4	M10x1.5-M	29.7	82	83	-	10	17	9.0
VOF-1.5-M14X1.5-EH-80X40(NBR-60)	42	43	5	M14x1.5-M	31.7	82	83	-	10	22	9.0
VOF-1.5-RA-80X40(NBR-60)	42	43	4	-	32.7	82	83	32	-	-	9.0
VOF-1.5-G1/4-EH-110X55(NBR-60)	57	59	6	G1/4"-M	35.5	112	114	-	8	17	13.0
VOF-1.5-G1/4-IH-110X55(NBR-60)	57	59	8	G1/4"-F	43.0	112	114	-	8	17	13.0
VOF-1.5-G3/8-IH-110X55(NBR-60)	57	59	8	G3/8"-F	43.5	112	114	-	9	22	13.0
VOF-1.5-M10X1.5-EH-110X55(NBR-60)	57	59	4	M10x1.5-M	35.5	112	114	-	10	17	13.0
VOF-1.5-M14X1.5-EH-110X55(NBR-60)	57	59	6	M14x1.5-M	37.5	112	114	-	10	22	13.0
VOF-1.5-RA-110X55(NBR-60)	57	59	6	-	38.5	112	114	32	-	-	13.0