

### 技術資料 Technical data

#### ● 介紹及應用 Introduction and application

搬運表面非常粗糙或極不平整的工件  
(例如裝飾玻璃，網紋鋼板，斷裂的天然石料等)



Handling workpieces with very rough or very uneven surfaces  
(such as decorative glass, Reticulated steel plate, broken natural stone, etc.)

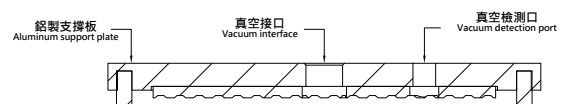
#### ● 結構 Structure

堅固耐磨的 VPS 真空吸盤，由海綿、橡膠墊和鋁製支撐板組成  
海綿安全牢固地嵌入在支撐板  
磨損的海綿可單獨更換  
支撐板底部帶有橡膠墊，保護工件不受損

Sturdy and wear-resistant VPS vacuum suction cup, composed of sponge, rubber pad and aluminum support plate  
The sponge is safely and firmly embedded in the support plate  
Worn sponges can be replaced individually  
Rubber pad at the bottom of the support plate to protect the workpiece from damage

#### ● 訂購代號 How to code

<b>VPS</b>	-	<b>G 1/4</b>	-	<b>EH</b>	-	<b>30</b>
產品代號 Product code		連接牙口 Connect the mouth		螺紋總類 Type of thread		吸盤尺寸 Suction cup size
		G 1/4 兩分 G 1/2 四分		 內螺紋 IH		55 55mm 80 80mm 110 110mm 160 160mm 200 200mm 250 250mm

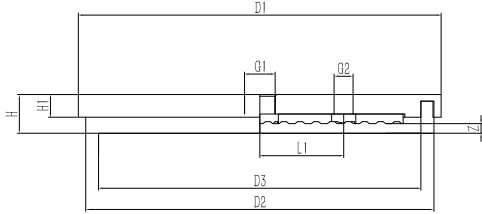


#### ● 標準尺寸資料 Standard size data

VPS-G1/4-IH-55
VPS-G1/4-IH-80
VPS-G1/2-IH-110
VPS-G1/2-IH-160
VPS-G1/2-IH-200
VPS-G1/2-IH-250

### 外觀尺寸圖 Dimensions

VPS



型号 Model	吸力 Suction	内部體積 Internal volume	工件最小曲率半徑 Workpiece minimum radius of curvature	推薦軟管直徑 Recommended hose diameter
	Ds[N]	[cm <sup>3</sup> ]	[mm] (凸形)	d[mm]
VPS-G1/4-IH-55	121	15	250	9
VPS-G1/4-IH-80	256	32	300	9
VPS-G1/2-IH-110	471	67	-	12
VPS-G1/2-IH-160	1060	128	-	12
VPS-G1/2-IH-200	1700	198	-	12
VPS-G1/2-IH-250	2714	305	-	12

型號 Model	尺寸 Size [mm]										
	D1	Model	D2	D3	Suction	H	H1	L1	G1	G2	Z(行程)
VPS 55	80		70	55	24	14	-		G1/4	-	6
VPS 80	105		95	80	24	14	22		G1/4	G1/4	6
VPS 110	135		125	110	24	14	36.5		G1/2	G1/4	6
VPS 160	185		175	160	24	14	42		G1/2	G1/4	6
VPS 200	225		215	200	24	14	52		G1/2	G1/4	6
VPS 250	275		265	250	24	14	77		G1/2	G1/4	6